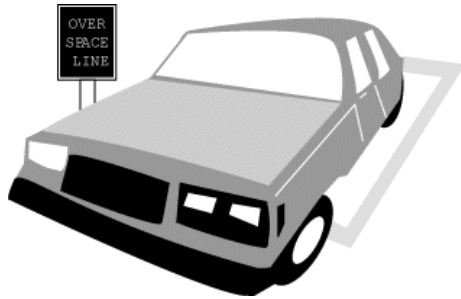


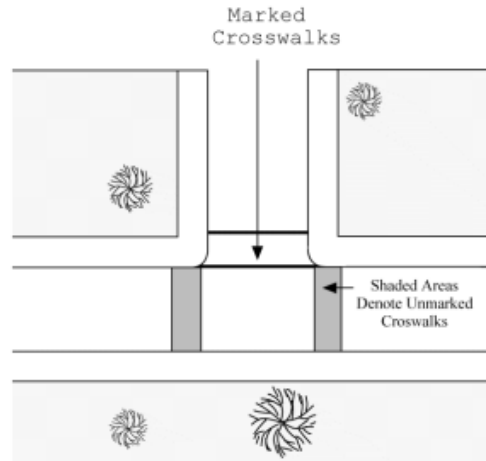
AVOIDING PARKING TICKETS



WHERE IS IT ILLEGAL TO PARK?

It is illegal to park in the following locations:

- No parking zones marked by a red curb, no parking or no standing signs.
- In front of a private or public driveway.
- In front of or within fifteen feet of a fire hydrant.
- Within marked or unmarked crosswalks. A crosswalk is considered to be the extension of sidewalk boundary lines across a road or at any location where crosswalks are marked with white or yellow lines.

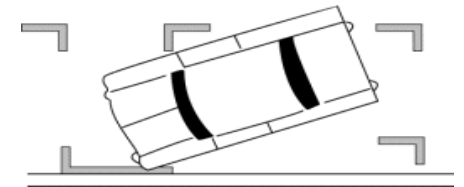


- Anywhere within an intersection including the corners curb area.



- Within 7'6" of a railroad track.
- For the purpose of advertising or selling.
- For the purpose of maintaining or repairing automobiles.

- In handicapped parking spaces without displaying the proper placard or license plate.
- Where a vehicle will obstruct or block a handicapped parking space.
- Within three feet of a handicapped access ramp.
- In the striped loading zone next to handicapped parking spaces.
- Straddling the markings or lines designating a parking stall.



WHAT DO GREEN, YELLOW, WHITE AND BLUE PAINTED CURBS MEAN?

Green Zones are limited term parking, usually 20 or 30 minutes as marked on the curb. In any limited parking zone, you can receive a citation if you exceed the maximum limit by one minute or more. To avoid a maximum citation, you must vacate the parking space within the time limit specified in order to let other

members of the public use these high demand spaces.

- **Yellow Zones** are for commercial vehicles to load and unload merchandise for up to 20 minutes only. Yellow zones are usually found in commercial areas and are for the use of adjacent commercial establishments.
- **White Zones** are for loading and unloading passengers for up to three minutes only and are usually used in such places as airports, hospitals, bus and train stations.
- **Blue Markings** reserve parking spaces for disabled persons and are provided in off road parking lots.

WHEN DOES THE CITY INSTALL LIMITED TERM PARKING ZONES (GREEN) AND LOADING ZONES (YELLOW OR WHITE)?

The Public Works Department will consider installing limited term parking zones (green) and loading zones (yellow or white) if a petition representing at least 75% of the affected adjacent property owners is received in support of the request.

CAN THE BACK OF A VEHICLE OVERHANG THE SIDEWALK WHEN IT IS PARKED IN A PRIVATE DRIVEWAY?

The California Vehicle Code strictly prohibits vehicles from parking on sidewalks or overhanging the sidewalk and causing an obstruction, especially when parked in a driveway. The sidewalk must be kept clear at all times.

CAN SPECIALLY DESIGNATED PARKING SPACES FOR DISABLED PERSONS BE PROVIDED ON PUBLIC ROADS?

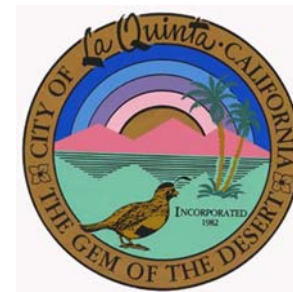
Parking spaces can be designated with blue markings for disabled persons on public roads. It should be noted however, that most of these roads have parking spaces which are too narrow to meet the requirements of the Americans with Disabilities Act.

REQUESTS AND INQUIRIES

If you have questions, requests or suggestions concerning traffic issues, please call the Public Works Department at **(760) 777-7075**, visit our website at www.la-quinta.org or submit a request using our GORquest system via the web or free downloadable app:

www.la-quinta.org/your-government/public-works/report-an-issue

AVOIDING PARKING TICKETS



City of La Quinta

Public Works Department
City of La Quinta
78-495 Calle Tampico
La Quinta, CA 92253