

La Quinta, California Community Services Master Plan Executive Summary Recommendations and Action Plans May 2007

The complete Master Plan document is available from the City of La Quinta at www.La-Quinta.org



The City of La Quinta Community Services Master Plan was created to:

- provide both a vision for parks, recreation, trails and open space, and an action plan for implementing this vision
- survey the needs of residents
- provide a comprehensive review of the existing inventory of land, recreation facilities, programs, services and opportunities
- research and develop recommendations for all aspects of the City's recreational service area including staffing needs, operation and maintenance funding needs, and recreational programming needs
- develop a strategic set of goals, objectives, and actions for the next five years
- identify land needs for future parks and open space acquisition
- provide a capital improvement schedule, and review of existing finance strategies
- develop recommendations to fund improvements

Findings and Analysis were compiled through a detailed process involving:

- public meetings and focus groups
- stakeholder meetings and staff input
- a statistically-valid survey sent randomly to 1,750 homes in the City and a separate survey to over 300 residents and businesses from the City's Sphere of Influence area
- analysis of demographics and trends
- a complete inventory of all parks, open space, facilities, programs, services, partners and alternative providers
- SWOT analysis
- GRASP[®] Analysis of current and future Levels of Service for the parks, facilities and their components

Purpose of these recommendations:

- To identify key focus areas for improvement for the immediate future, short term goals within 1-2 years, and long term goals within the next 5 years
- To identify priorities and costs and funding mechanisms for improvements, expansions, further study, and conceptual capital projects
- To plan to update this master plan every 5 years

General Themes for Improvement:

- Community Connectivity
- Maintain Current LOS as Population Grows
- Improve Level of Service
- Review Development Impact Fee
- Incorporate Best Management Practices

Key Components:

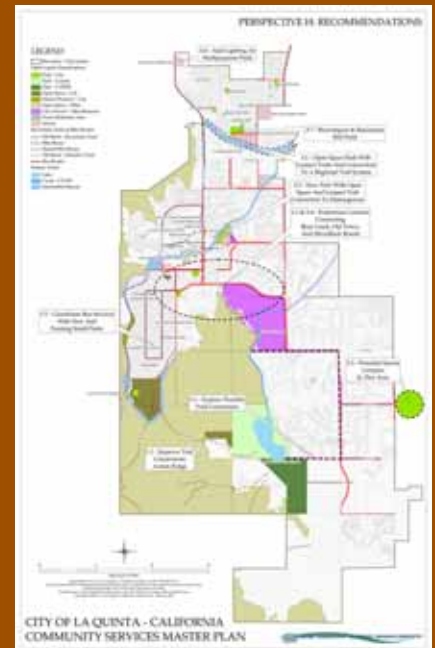
The following were identified as the most important for consideration within the next 5 years:

- **Trails and Connectivity**
- **Capital Improvements Plan**
- **Continue Enhancement through Partnerships**
- **Feasibility Studies and Site Planning**
- **Land Purchases, Dedications & Impact Fees**

Understanding the Priorities:

The **Findings and Analysis Compilation** completed in January 2007

identified the access to parks, trails, open space, recreation facilities and programs and the current level of service for the City of La Quinta.



Considerations:

Strive towards a goal of available recreation programs, services, and parks with **key components** that are **walkable** (within 1/3 mile - 10 minutes). Minimum **key components** consist of **two passive** amenities or features like an open turf area, public art, community rooms, museums, library or shelter, **two active** amenities like a sports field, playground, golf course, tennis or basketball courts, dog parks, **and connectivity** to other parts of La Quinta, a recreation trail system or loop.

La Quinta, California Community Services Master Plan Executive Summary Recommendations and Action Plans May 2007



#1 – Community Connectivity

- Implement Trail System Plan
- Coordinate public transportation and school bus routes with parks, recreation and community services, facilities and programs

#2 – Maintain Current LOS as Population Grows through the Park System

#3 - Improve LOS Improvements

- Special facility feasibility study - open space park along the whitewater channel in north La Quinta
- Special facility feasibility study - open space and park along the drainage way
- Special facility feasibility study and land acquisition - new sports complex
- Site master plan for the Old Town Corridor
- Open space and natural facilities plan
- Add lighting at Colonel Page Middle School field
- Re-configure or re-purpose the La Quinta Park ball field
- Add fitness and wellness program space
- Increase the amount of land per capita

#4 – Impact Fee Review (review land dedication and impact fee requirements)

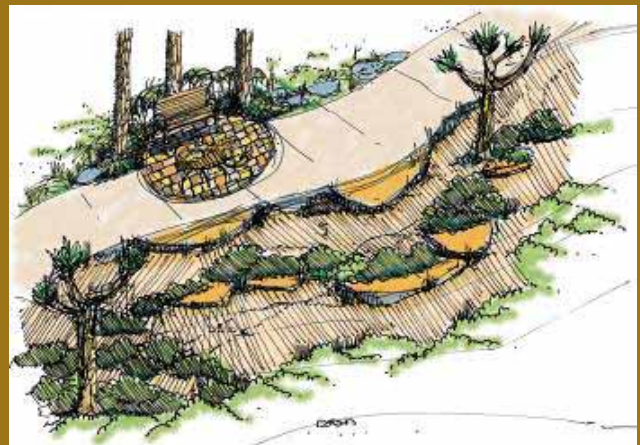
#5 – Best Management Practices

- Review and establish policies
- Track labor hours and equipment use for park and athletic field maintenance tasks
- Encourage, enhance and maximize relationships and partnership opportunities
- Establish life cycle costing assessments
- Implement a 5-year master planning schedule with annual updates
- Establish a 501 (c) 3 Community Services foundation
- Pursue grant opportunities
- Institute volunteer opportunities
- Continue review of park maintenance privatization
- Increase marketing efforts
- Design and renovate with CPTED principles

Considerations for All Recommendations:

Recommendations	Implementation Impacts
#1 – Community Connectivity	Staff time and bid TBD
#2 - Maintain Current LOS as the Population Grows	Staff time; annual allocations per year for development projects TBD over next 4 years plus land costs
#3 – Improve LOS	Staff time; one time costs for planning and study documents; annual allocations per year for developments projects TBD plus land costs
#4 – Impact Fee Review	Staff time
#5 – Best Management Practices	Staff time; computer costs TBD; allocations to update Master Plan; staffing costs TBD; construction costs TBD

Open Space Park along the Whitewater Channel – Oasis



The adoption of this Plan is exempt from the California Environmental Quality Act (CEQA), Public Resources Code Section 21000, et seq, under CEQA Guideline 15262. That Guideline exempts planning studies for possible future action, since the possible future action (e.g. parkland acquisition and development) is not being approved as part of the action to adopt this Plan. This Plan is not intended to be legally binding on the future actions of the Planning Commission or the City Council, but rather as a guide to formulate potential future actions which will be assessed pursuant to the City's normal processing requirements, including CEQA review. The adoption of this Plan is not intended to commit the City to any definite course of action in regards to the acquisition or development of parkland and recreational amenities.