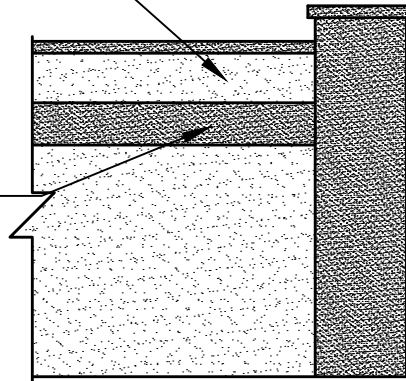


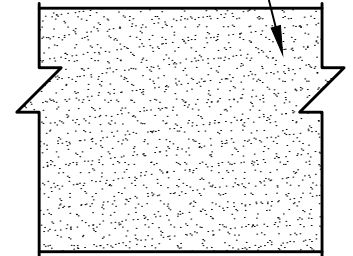
PERIMETER WALL
 COLOR: CANOE
 PRODUCT# 7724 (50%)
 BY SHERWIN WILLIAMS
 SEE CONSTRUCTION
 NOTE 4

PERIMETER ACCENT
 TRIM, COLUMNS & CAP
 COLOR: DORMER
 BROWN
 PRODUCT# SW7521
 BY SHERWIN WILLIAMS
 SEE CONSTRUCTION
 NOTE 4



PERIMETER WALL

PERIMETER WALL
 COLOR: CANOE
 PRODUCT# 7724 (50%)
 BY SHERWIN WILLIAMS
 SEE CONSTRUCTION
 NOTE 4



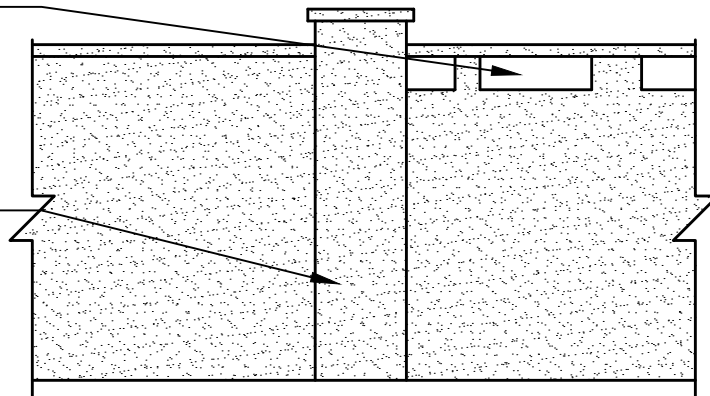
RAISED PLANTER

NOTE:

1. CONTRACTOR TO SUPPLY PAINTED SAMPLES OF ALL COLORS FOR THE APPROVAL BY LANDSCAPE ARCHITECT/CITY
2. SEE CONSTRUCTION NOTE #4

TILE ACCENT OPENINGS
 TO REMAIN AS IS.
 PROTECT IN PLACE,
 (TYP.)


WALL, COLUMNS & CAP
 COLOR: WHITE
 TO MATCH EXISTING,
 BY SHERWIN WILLIAMS
 SEE NOTE 4



PERIMETER WALL

NOTE:

1. CONTRACTOR TO SUPPLY PAINTED SAMPLES OF ALL COLORS FOR THE APPROVAL BY LANDSCAPE ARCHITECT/CITY
2. APPLIES TO CONSTRUCTION NOTE #4 ONLY

SCALE N.T.S.	REVISIONS NO. DATE	<i>La Quinta</i> GEM of the DESERT	DESIGN AND DEVELOPMENT DEPARTMENT	STANDARD PLAN NO.	
		APPROVED BY: CITY OF LA QUINTA	WALL CLEANING & PAINTING DETAIL	718 SHEET 1 OF 1	
		<i>Bryan McKinney</i>			11-4-2020
		BRYAN MCKINNEY PUBLIC WORKS DIRECTOR/CITY ENGINEER R.C.E. NO. 49418			DATE