

POWER POINTS

**CITY COUNCIL
MEETING**

JULY 18, 2023

City Council Regular Meeting July 18, 2023



1

City Council Regular Meeting July 18, 2023 CLOSED SESSION IN PROGRESS



2

Pledge of Allegiance



7/20/2023

3



7/20/2023

4

**City Council Meeting
July 18, 2023
Presentations**



5

**City Council Meeting
June 6, 2023**

**P1 – Certificate of Recognition to Jameson
Herrera for Receiving the
“Do The Right Thing” Award**



6



7

City Council Meeting June 6, 2023

P2 – Introduction of Fire Chief Richard Tovar



8



9

City Council Meeting June 6, 2023

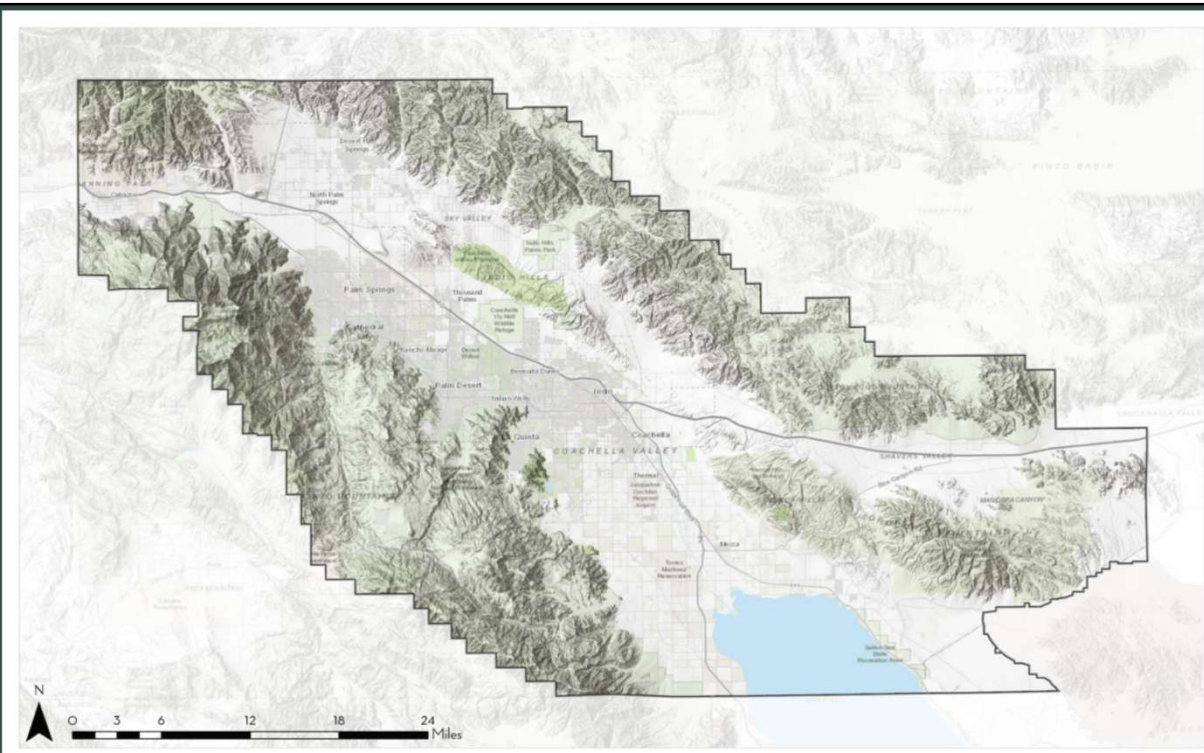
P3 – Coachella Valley Conservation Commission Update



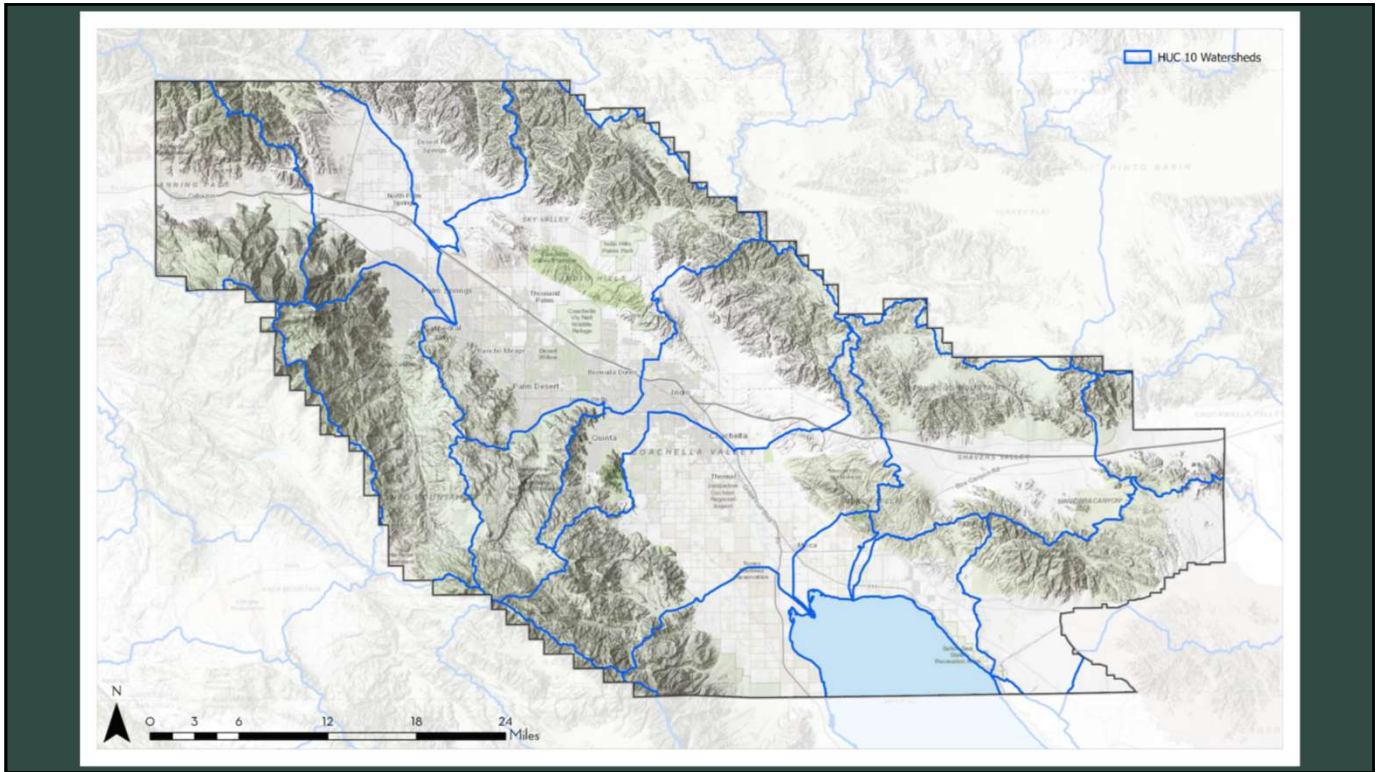
10

CVMSHCP 2022 Annual Report

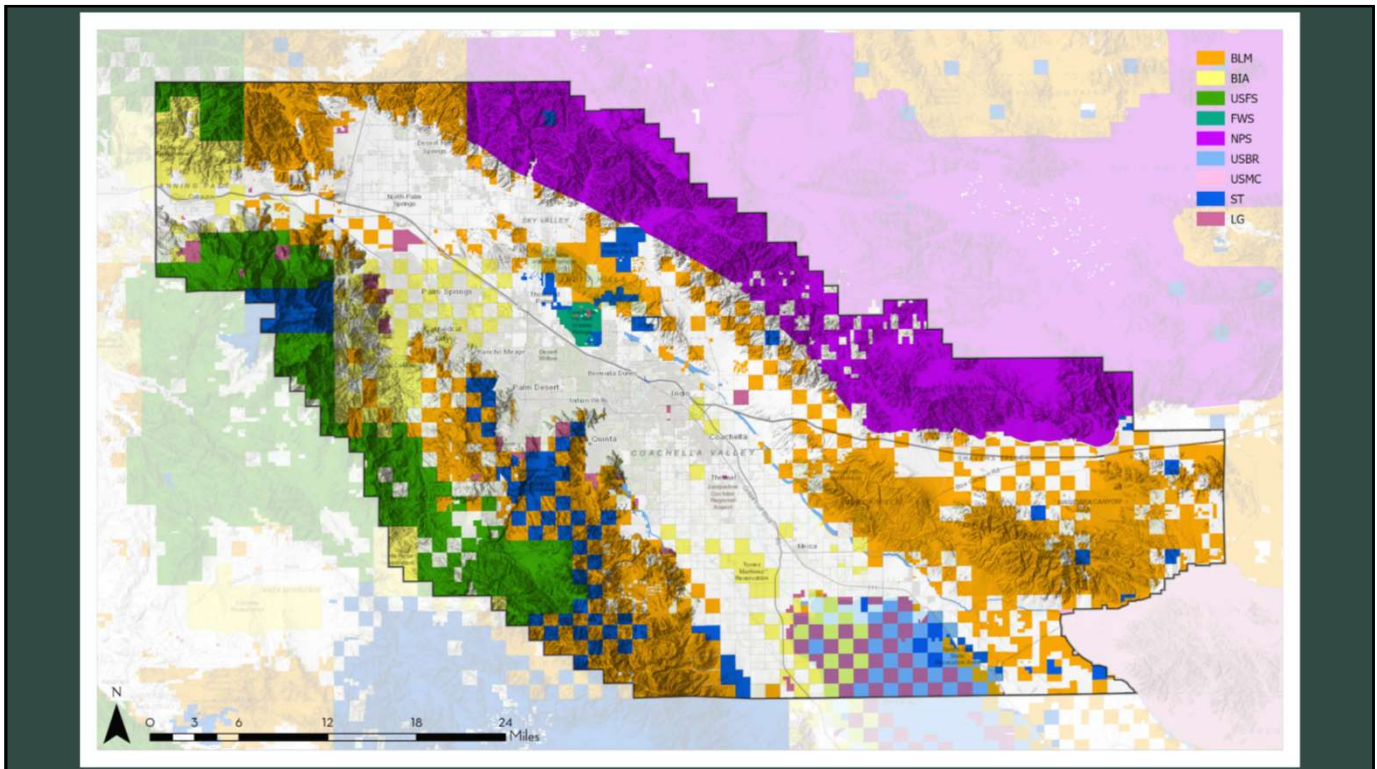
11



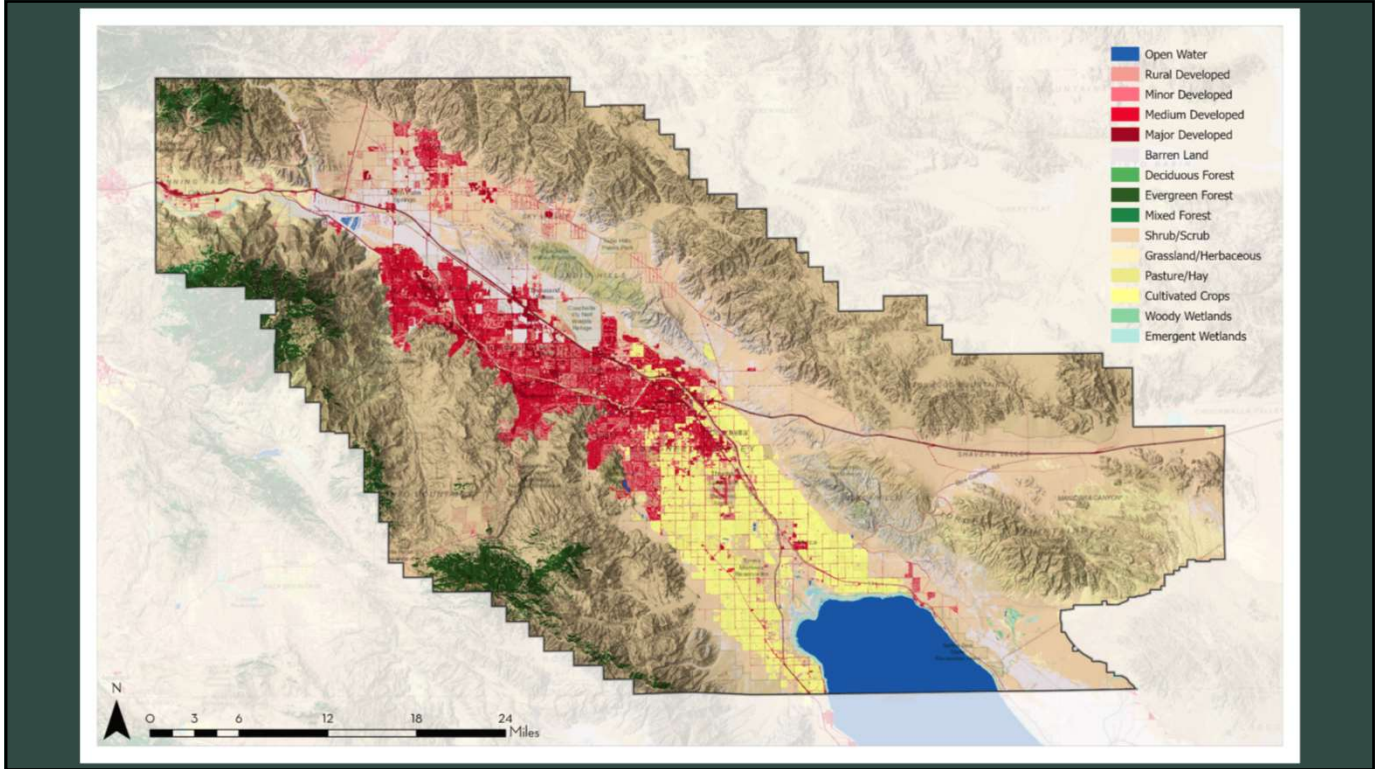
12



13



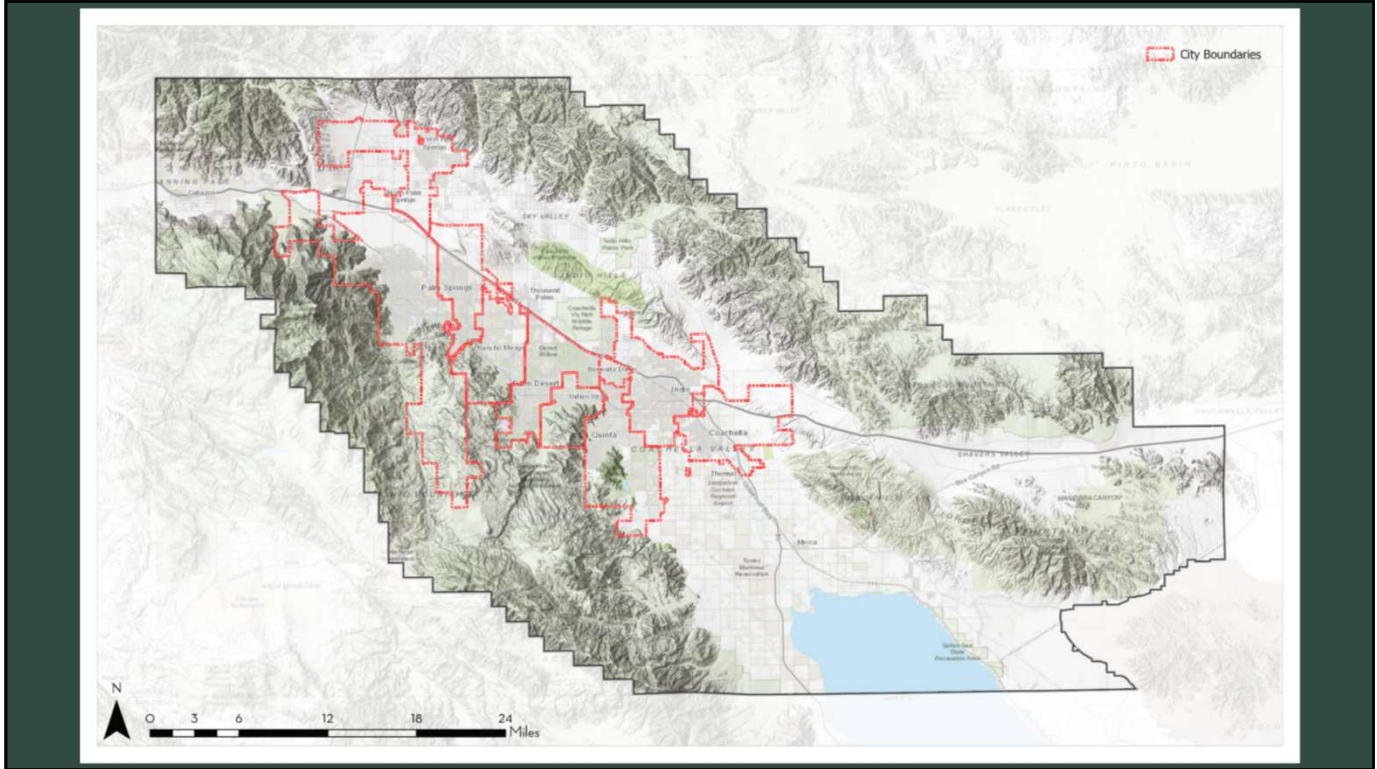
14



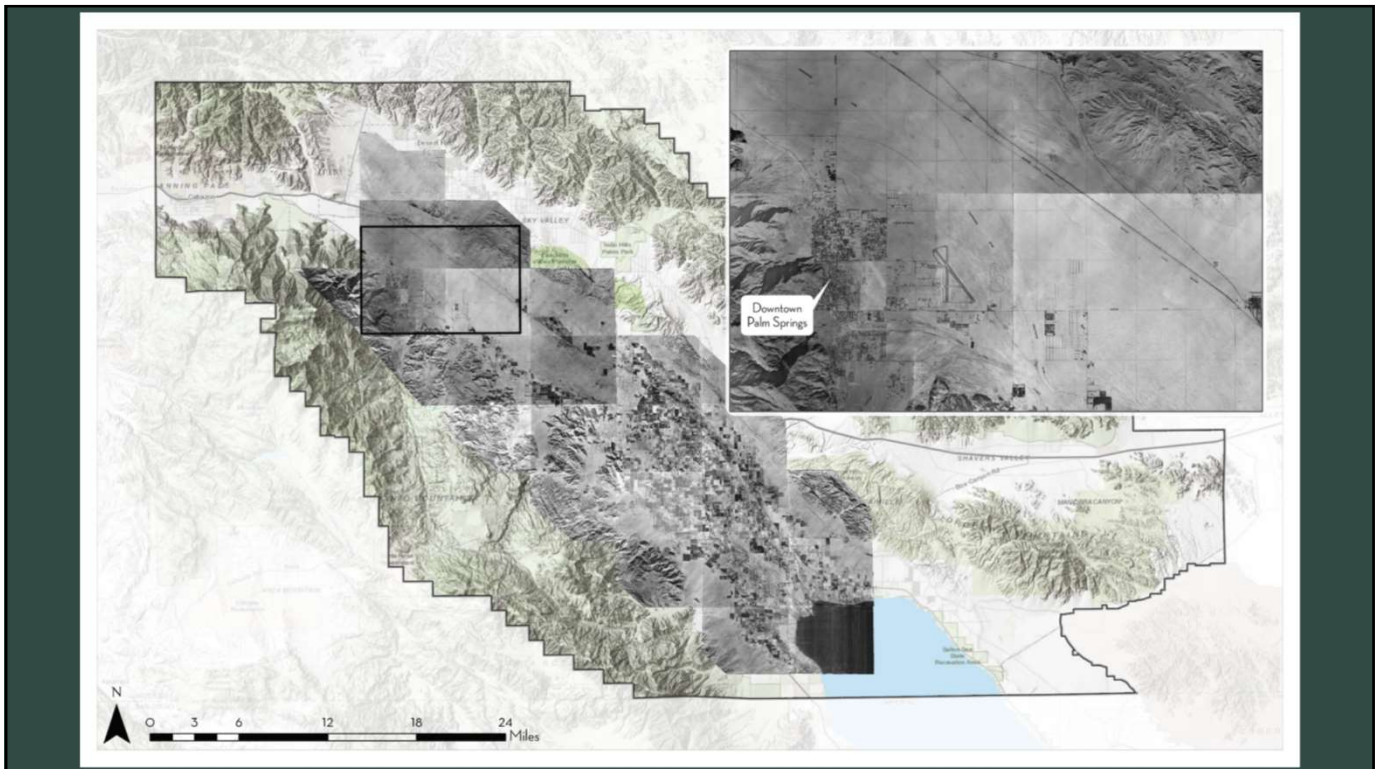
15



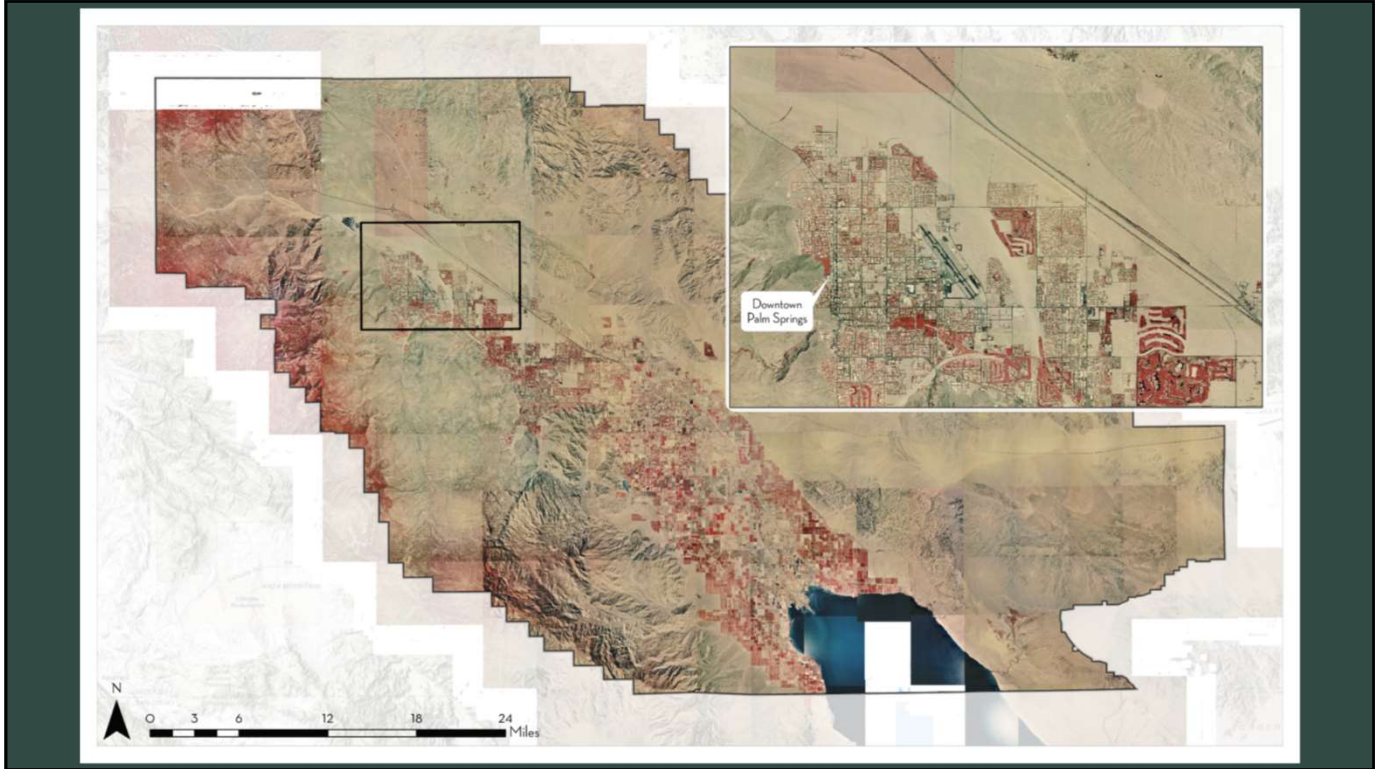
16



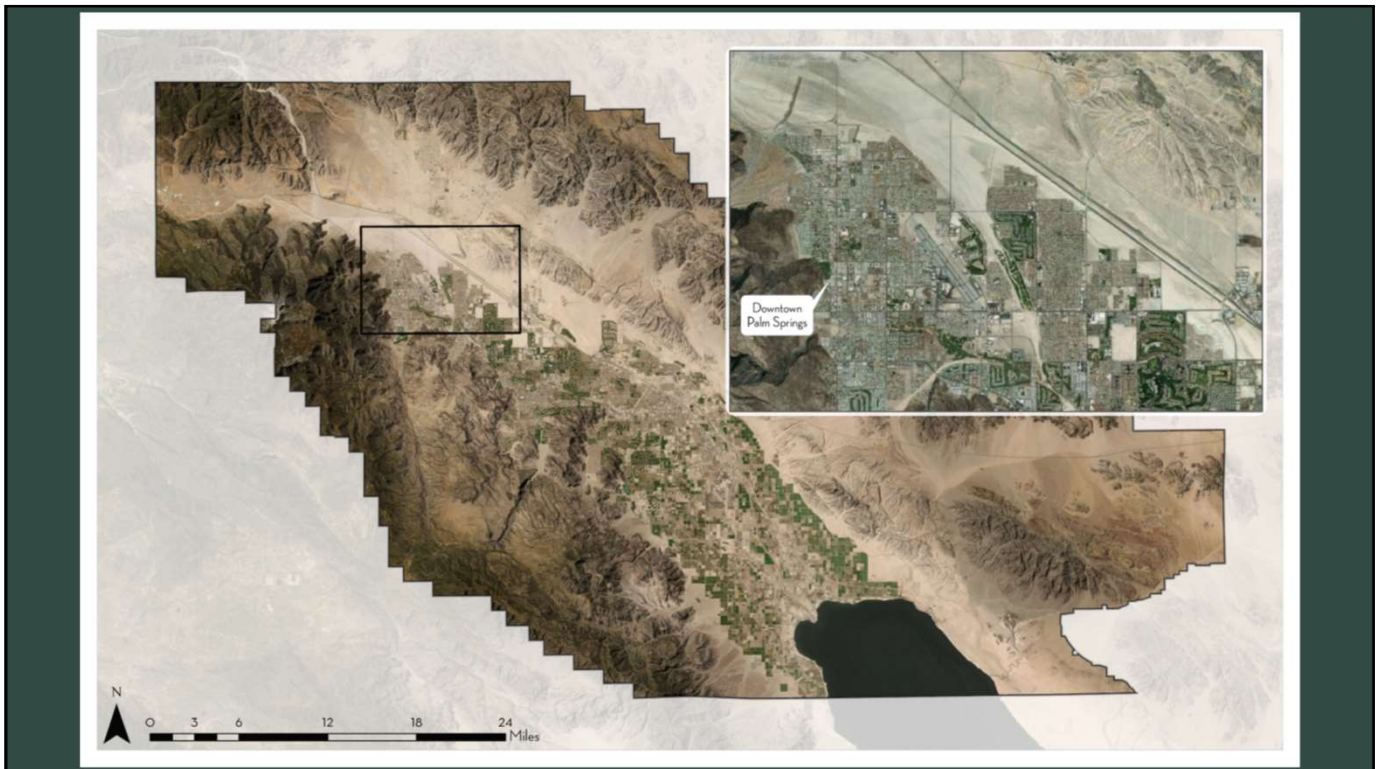
17



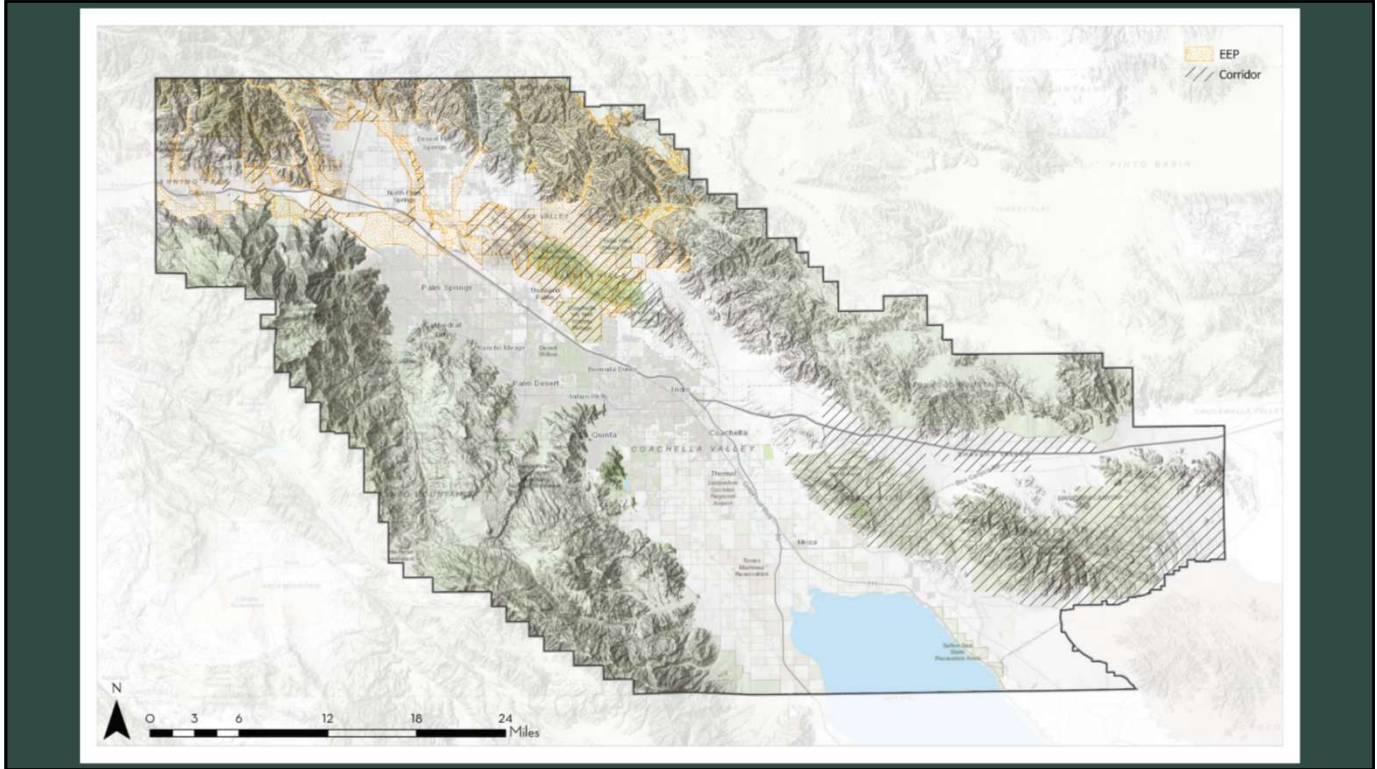
18



19



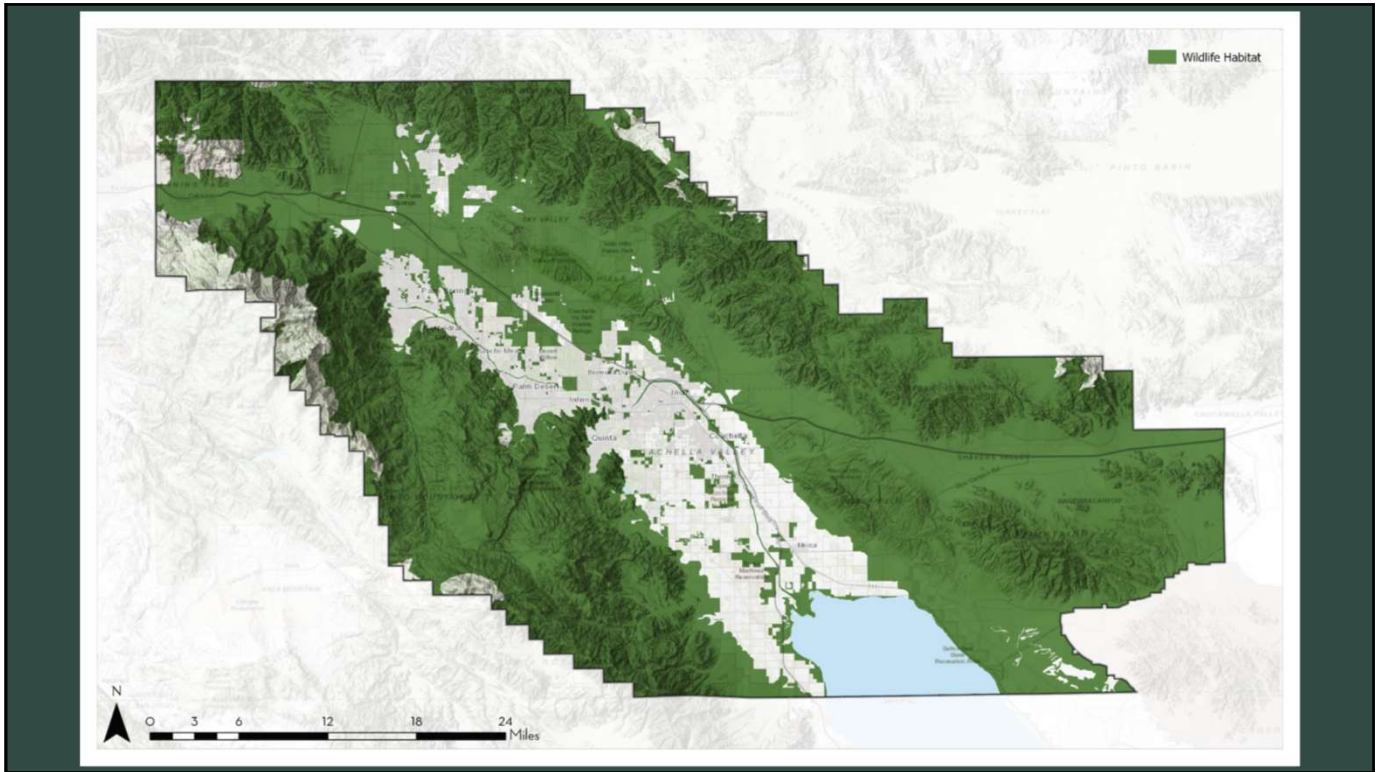
20



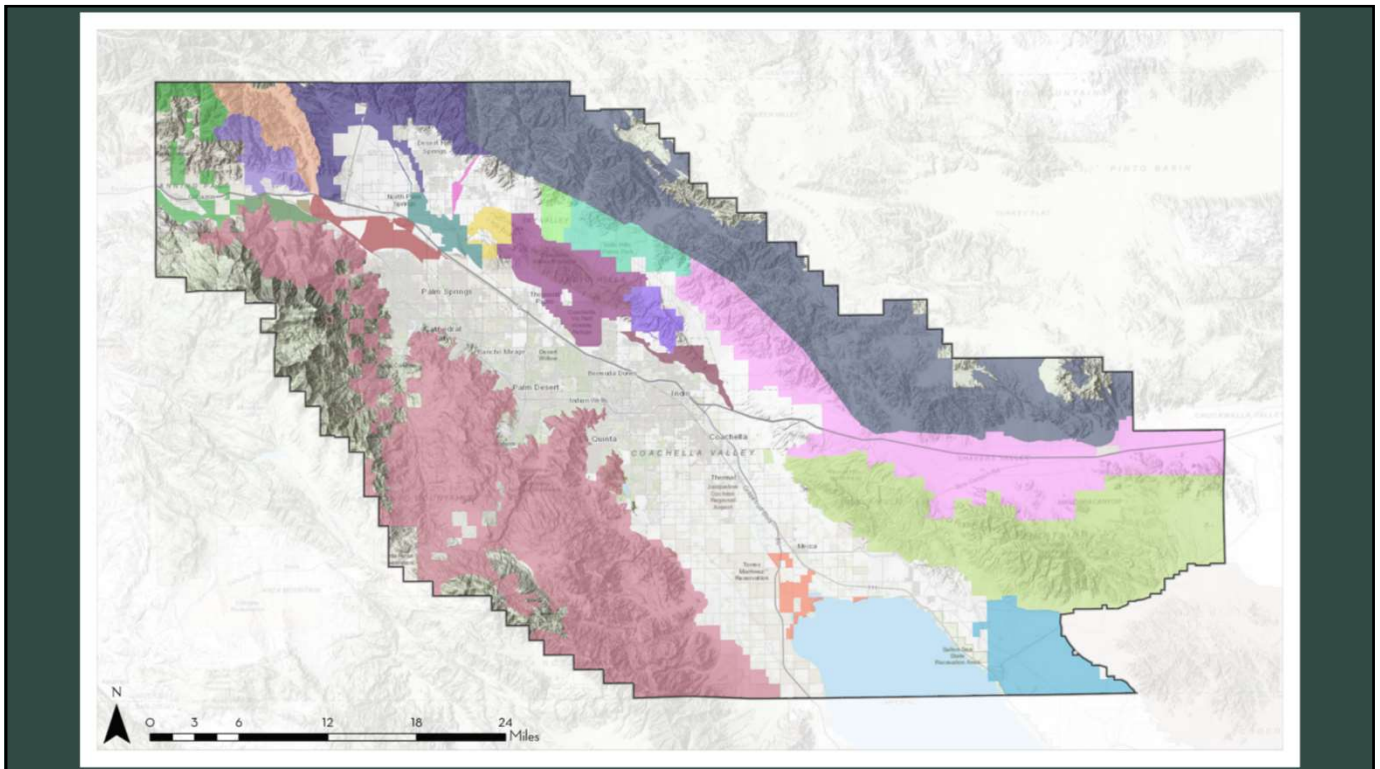
21



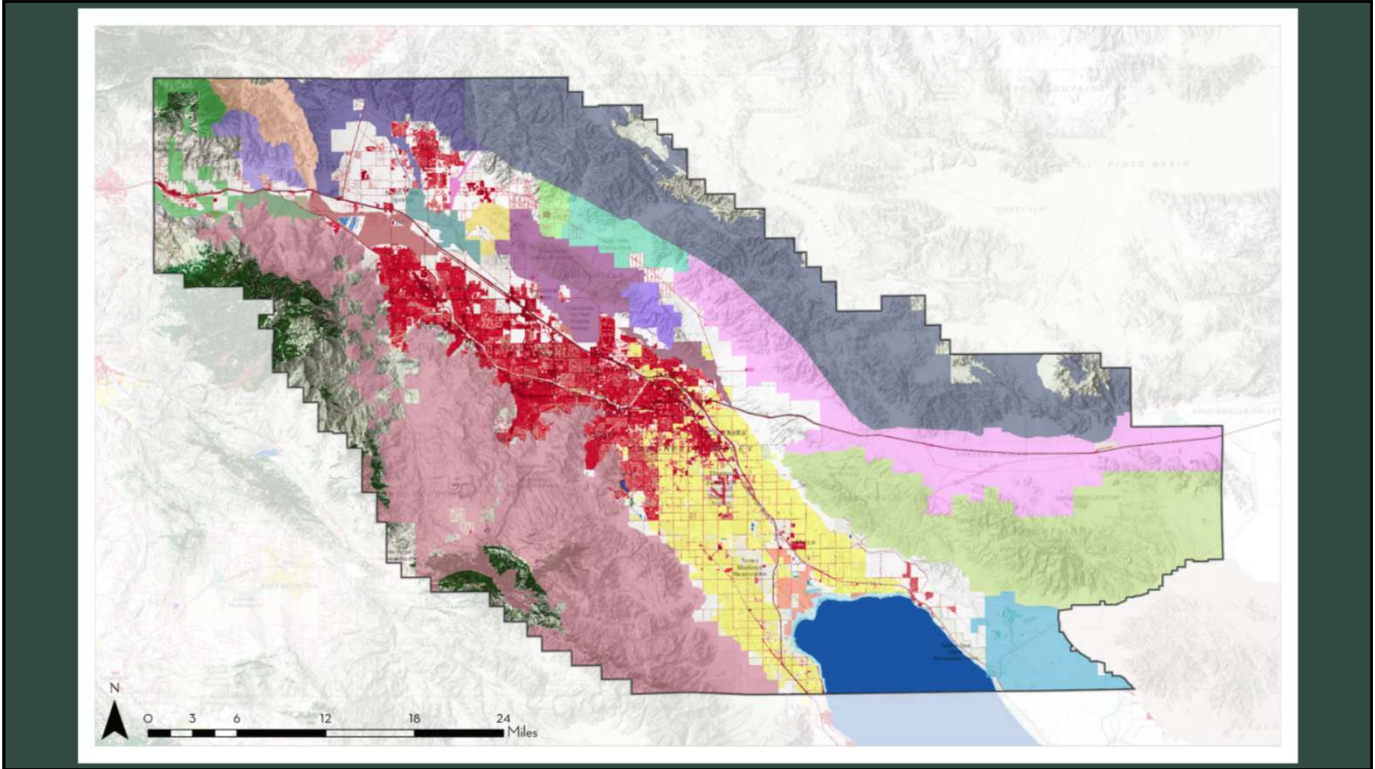
22



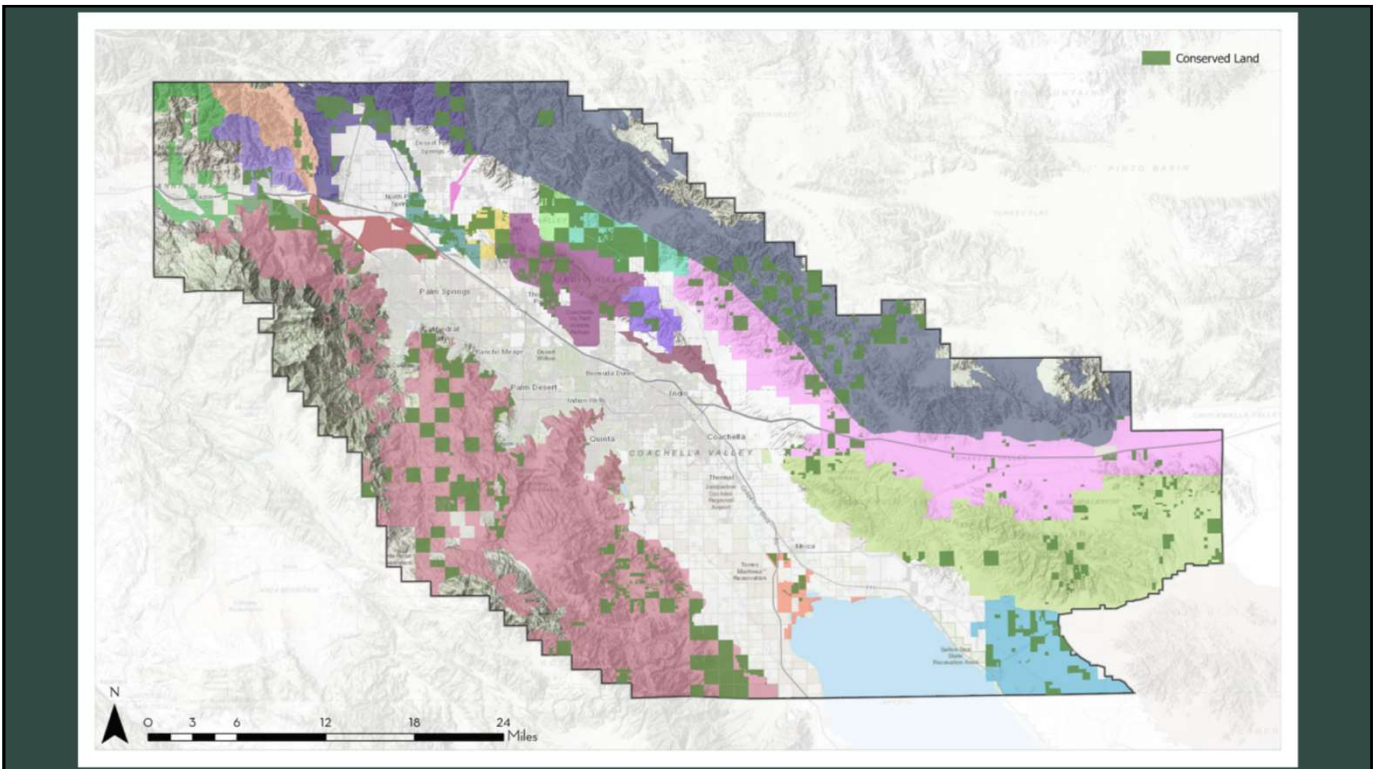
23



24



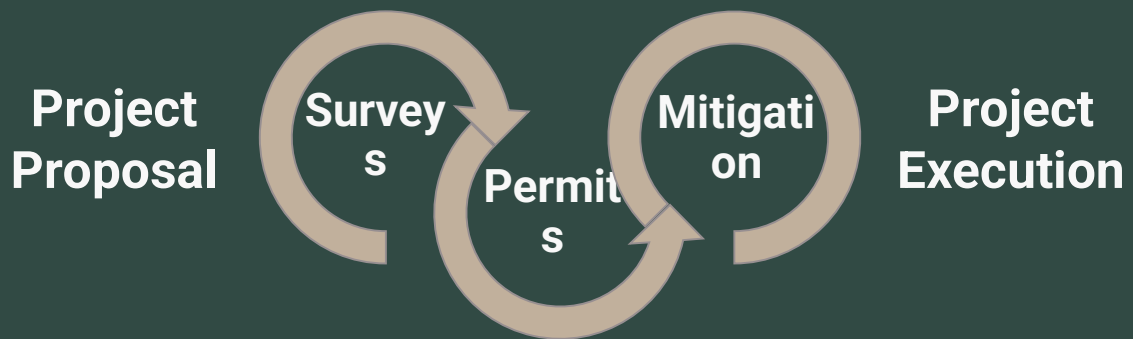
25



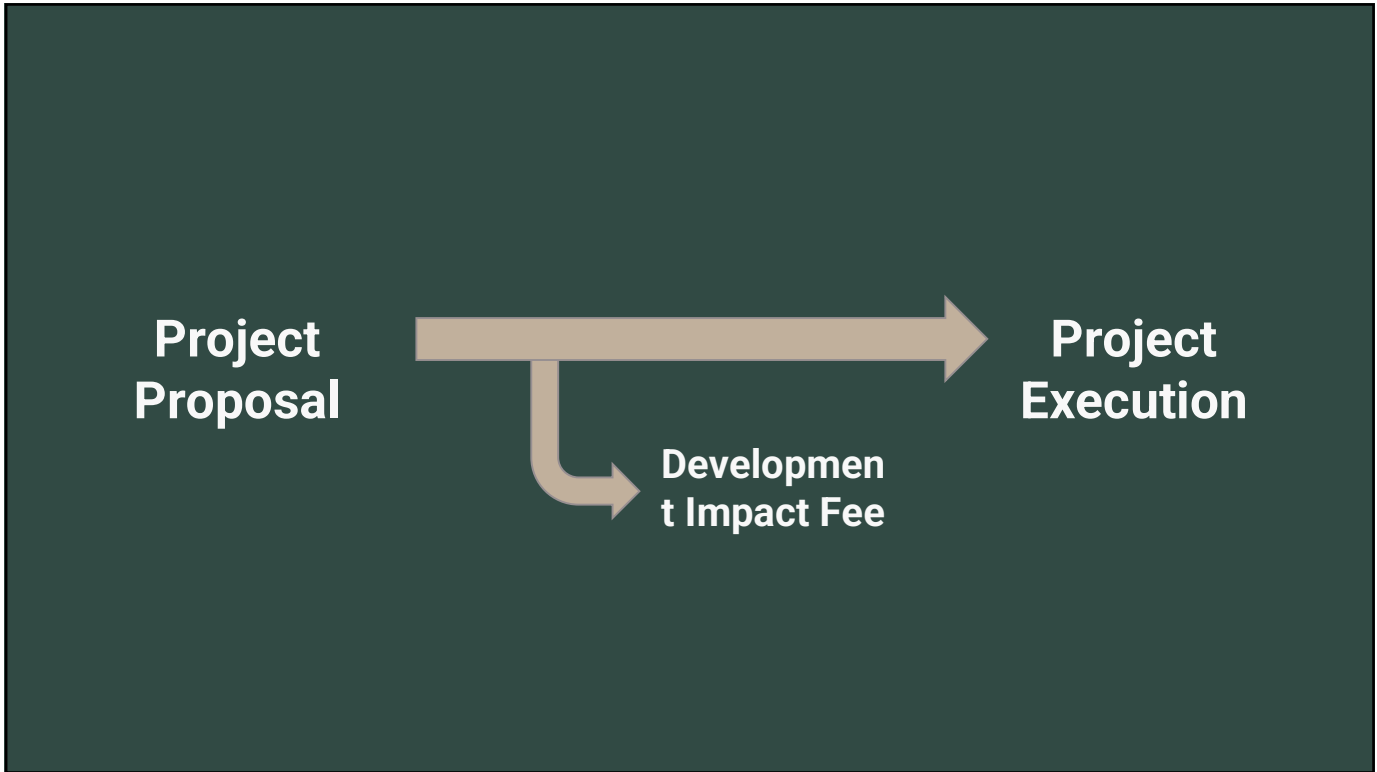
26



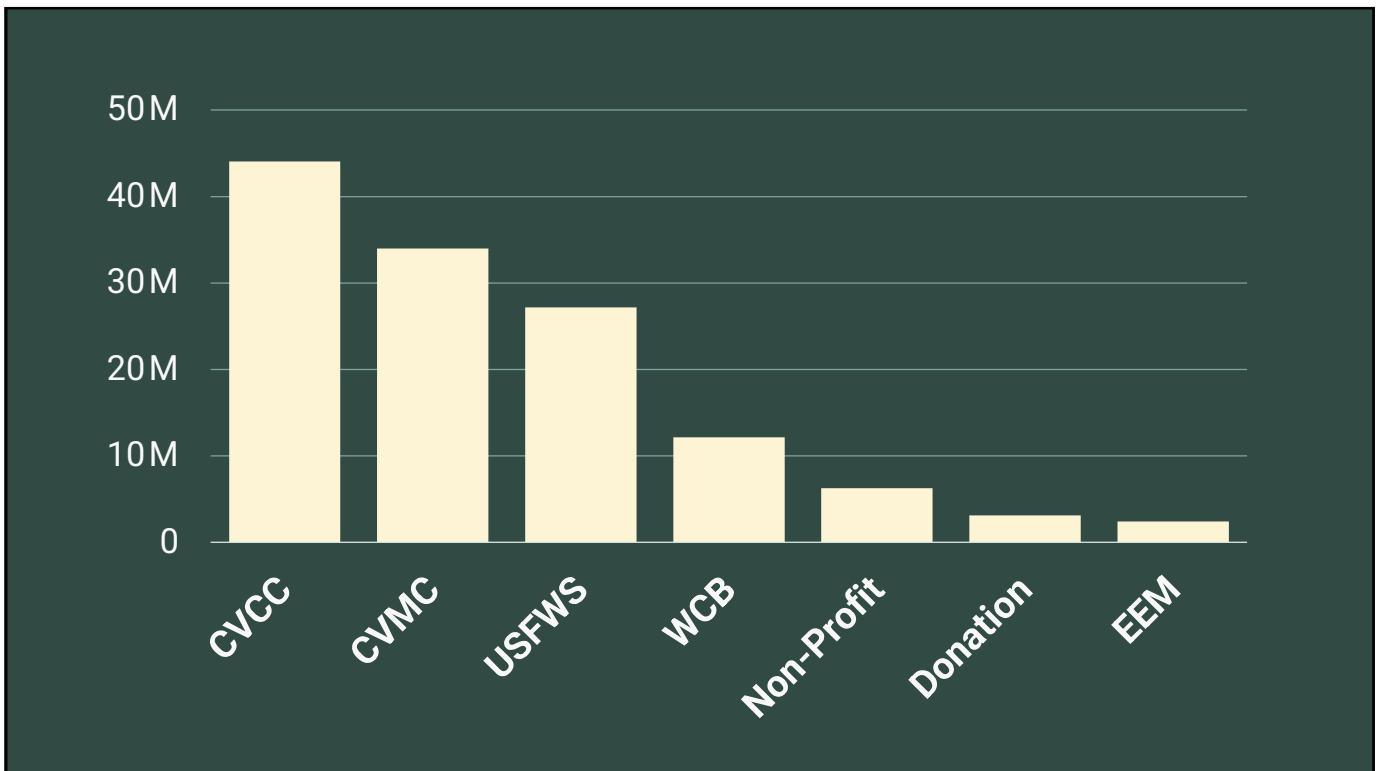
29



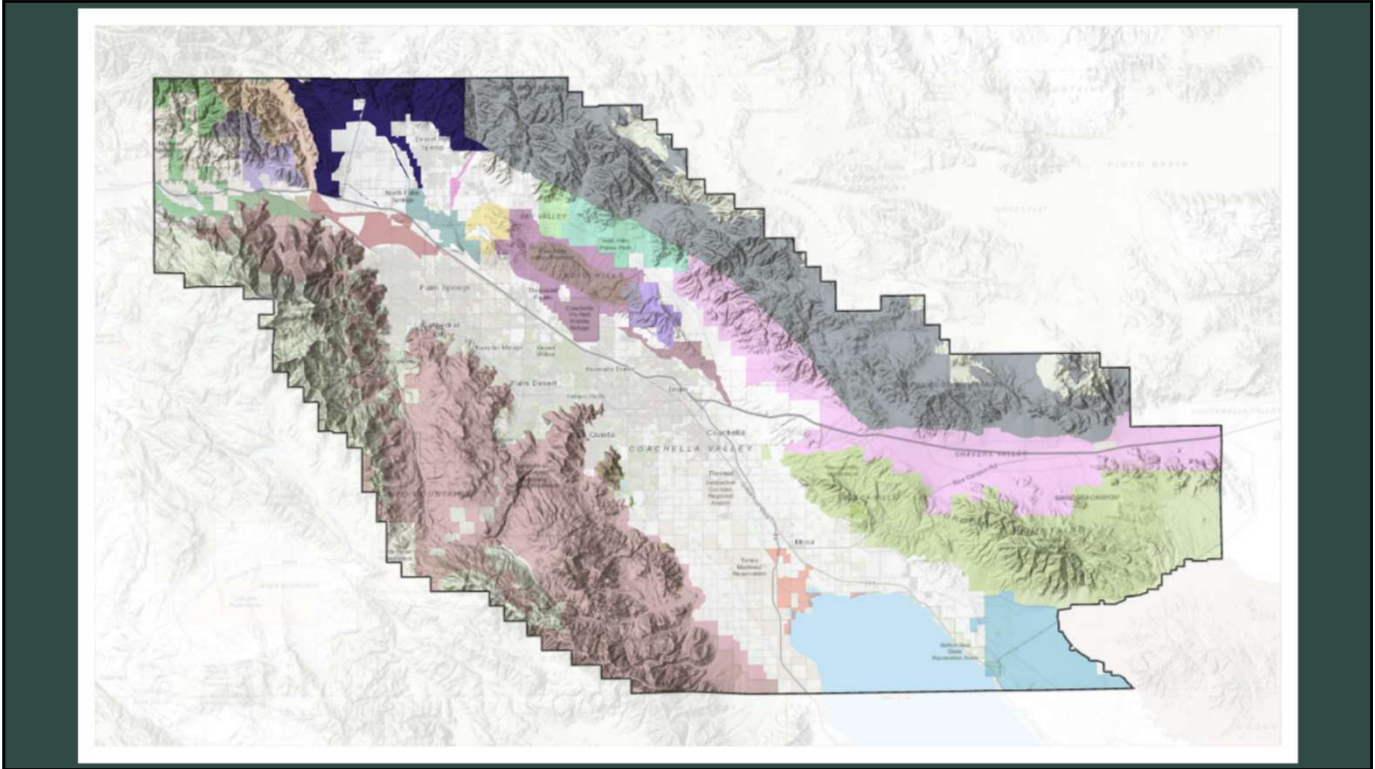
30



31



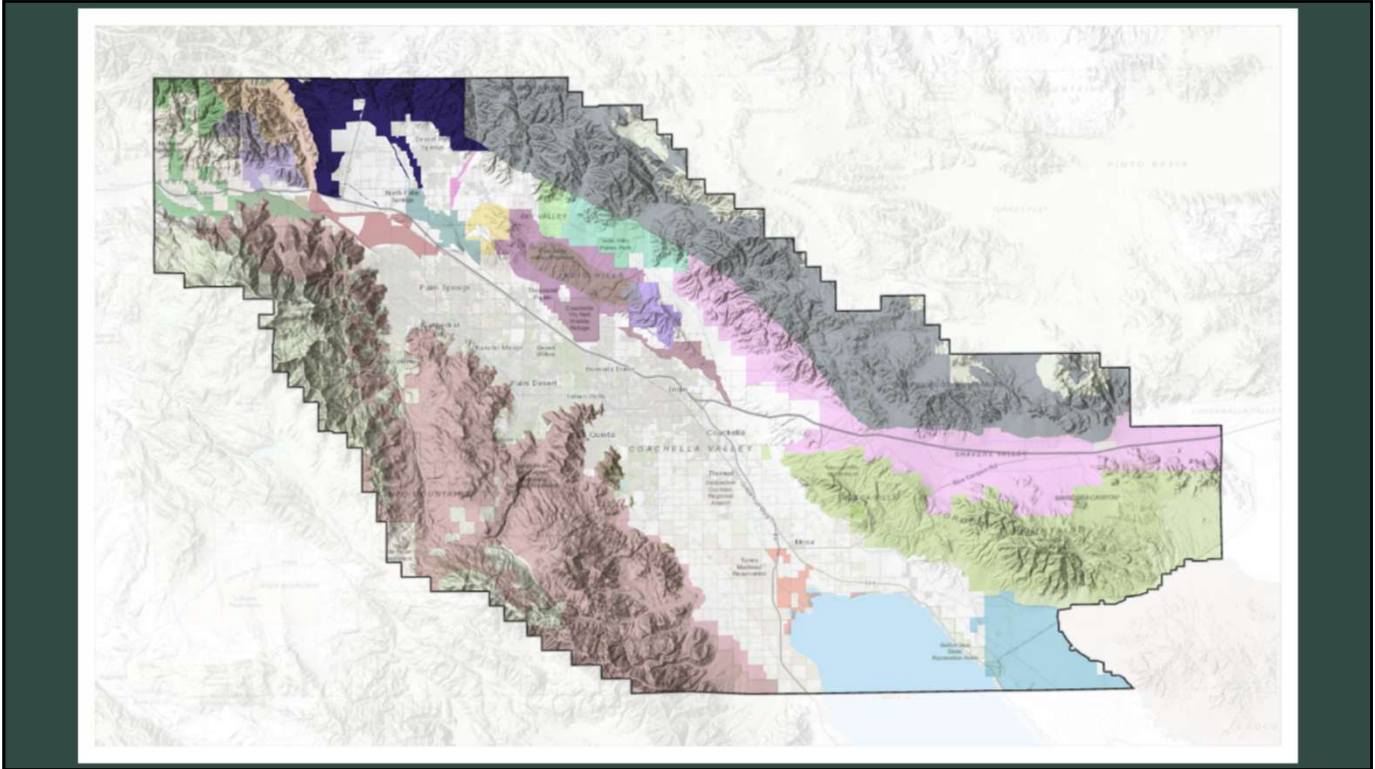
32



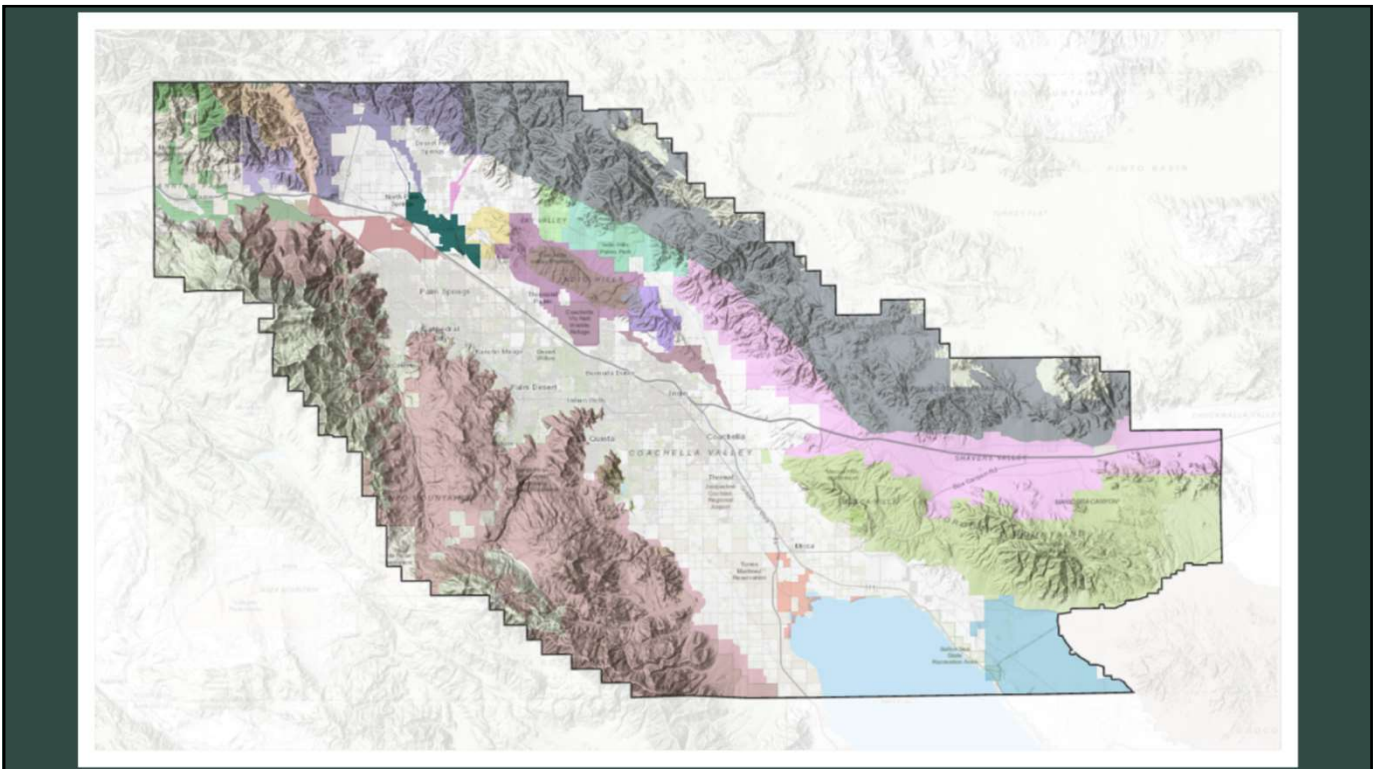
33



34



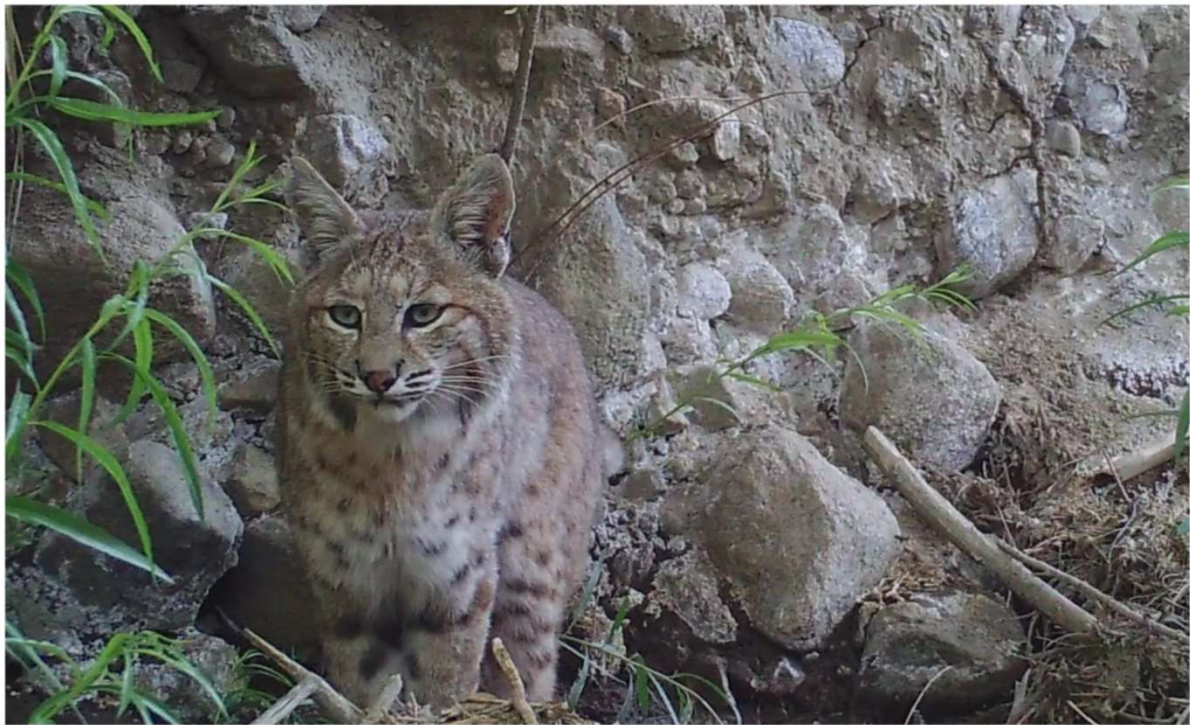
35



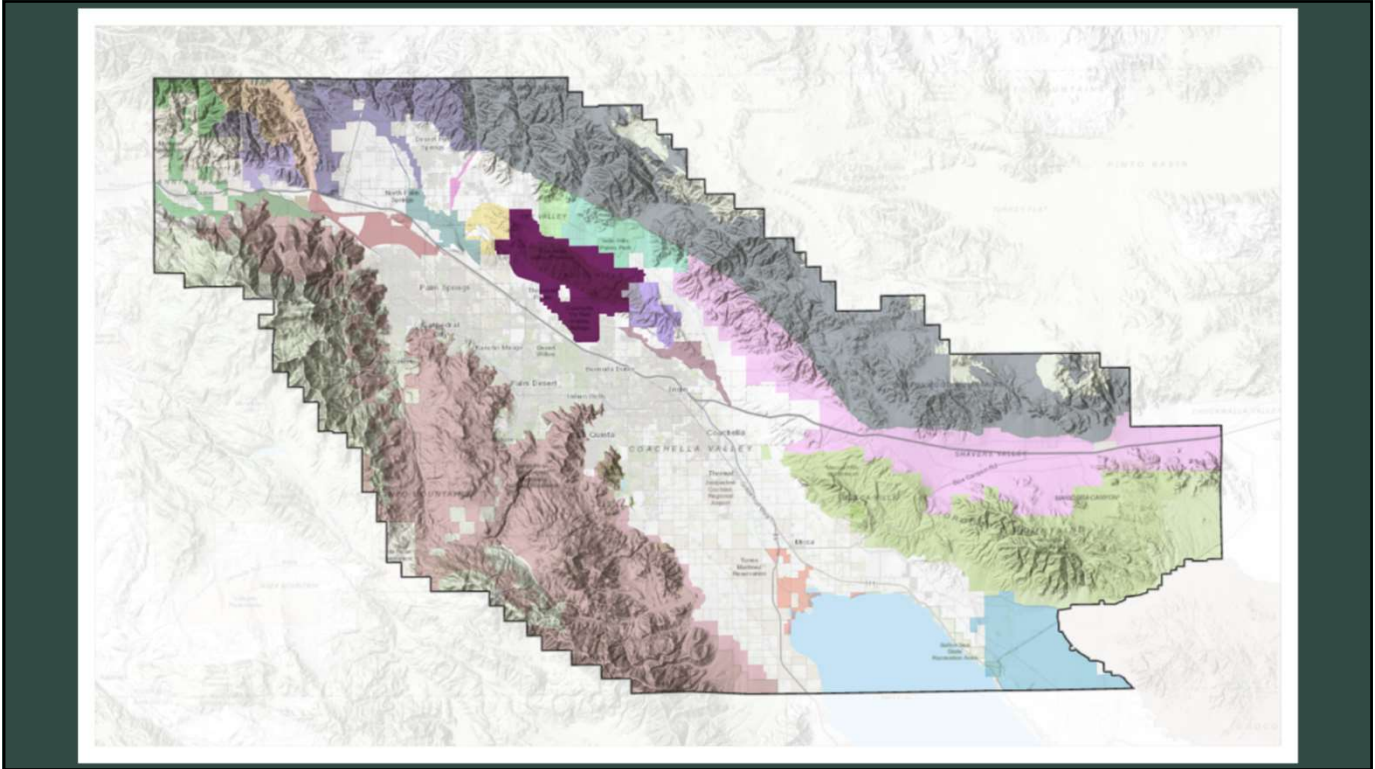
36



37



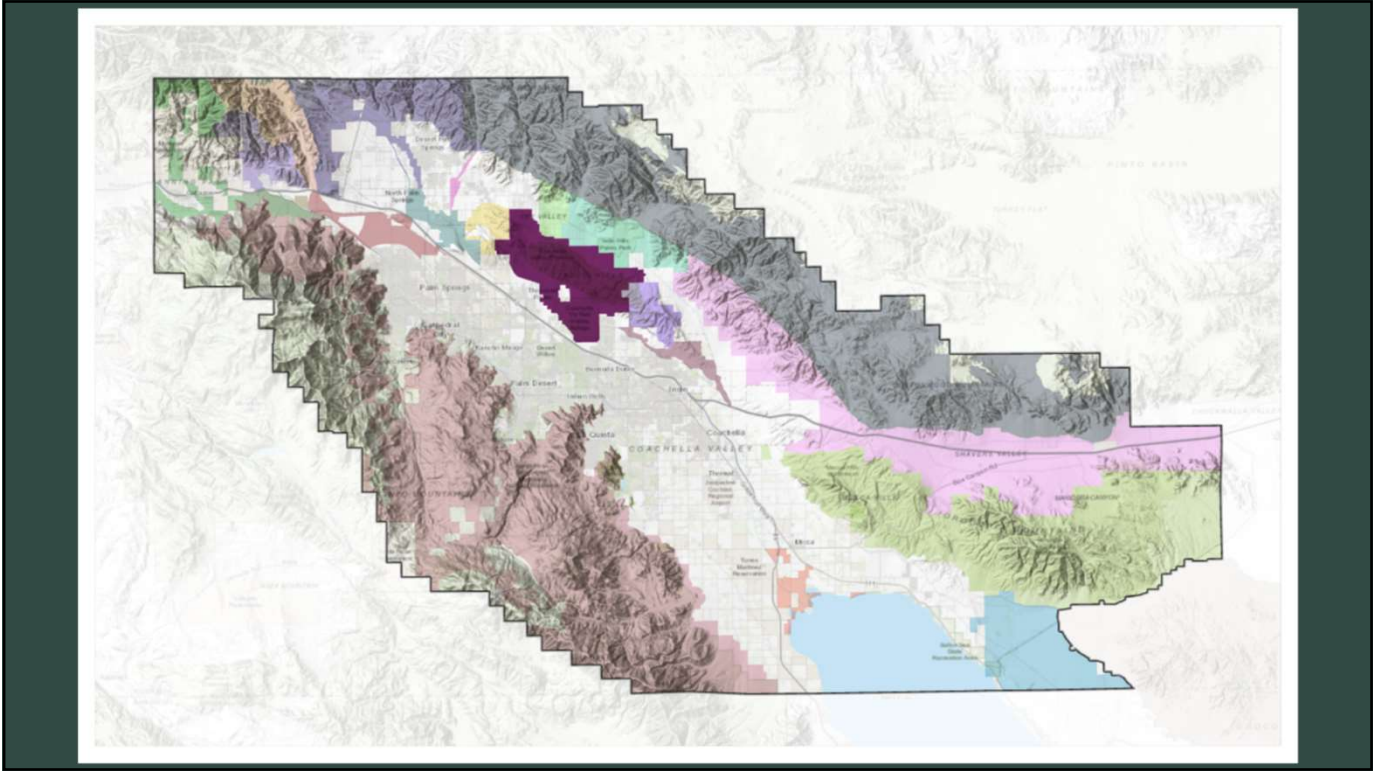
38



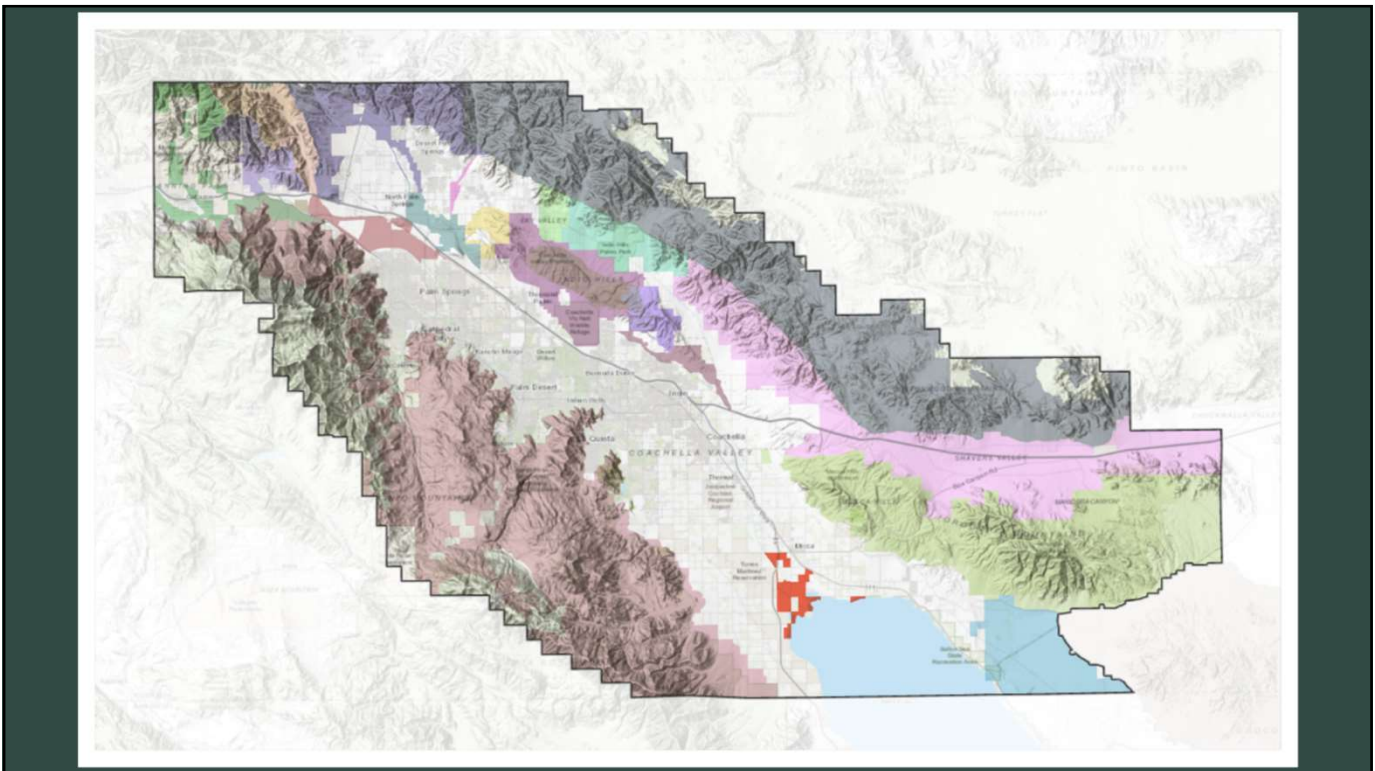
41



42



43



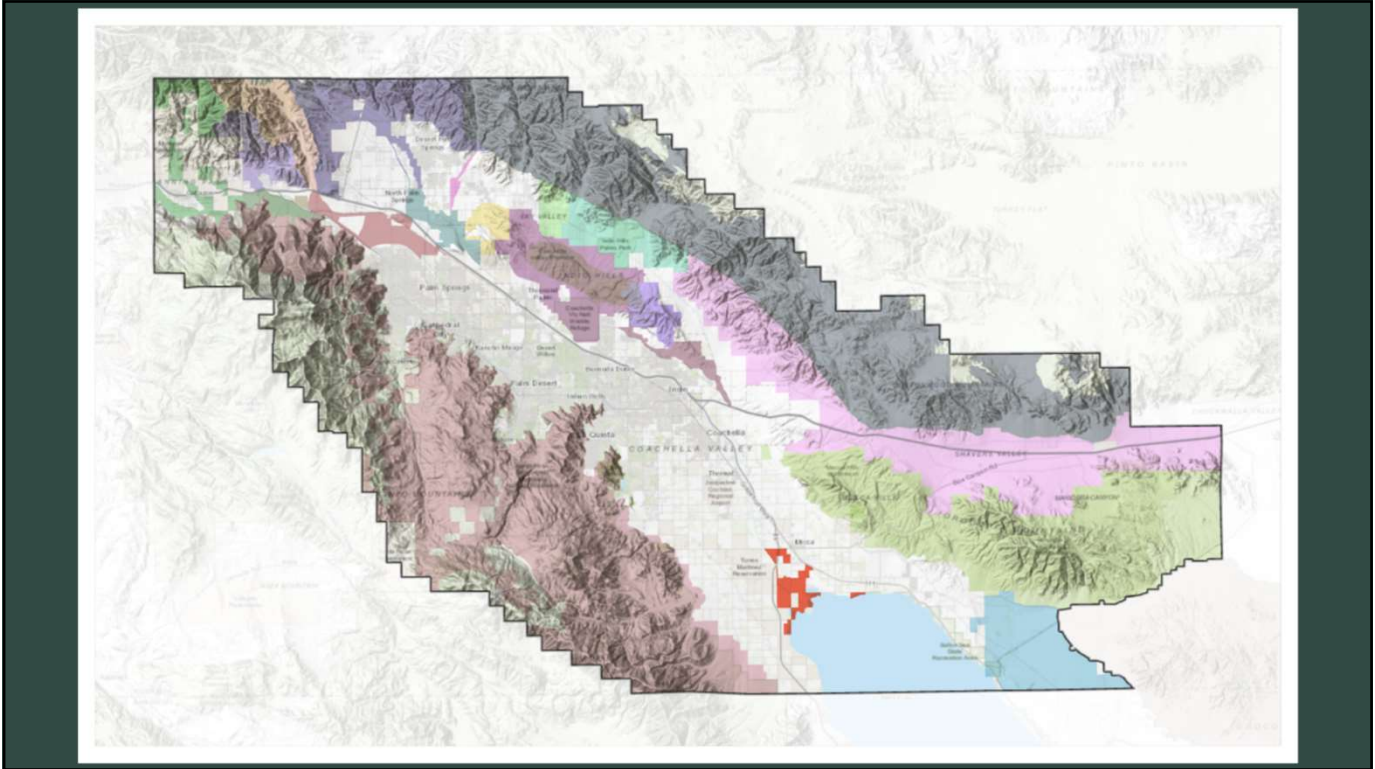
44



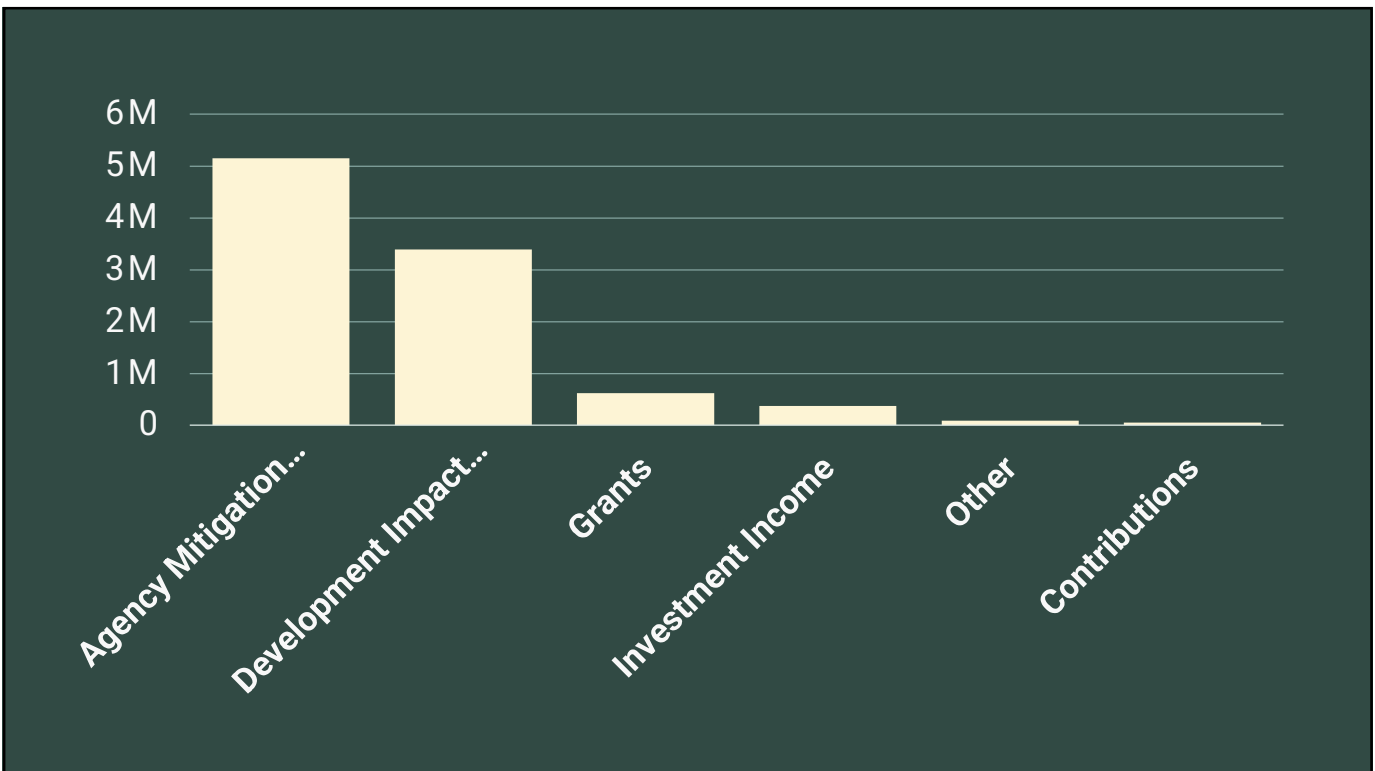
45



46



47



48



49



50

City Council Meeting July 18, 2023

B1 - APPROVE MASTERPLAN FOR THE LA QUINTA CULTURAL CAMPUS PROJECT AND AMENDMENT NO. 2 TO AGREEMENT FOR CONTRACT SERVICES WITH HGA



51

Cultural Campus



52

Cultural Campus

- HGA agreement approved March 1, 2022
- Initial concepts presented on June 21, 2022 and March 21, 2023
- Council provided feedback and directed HGA to return with a revised concept

53

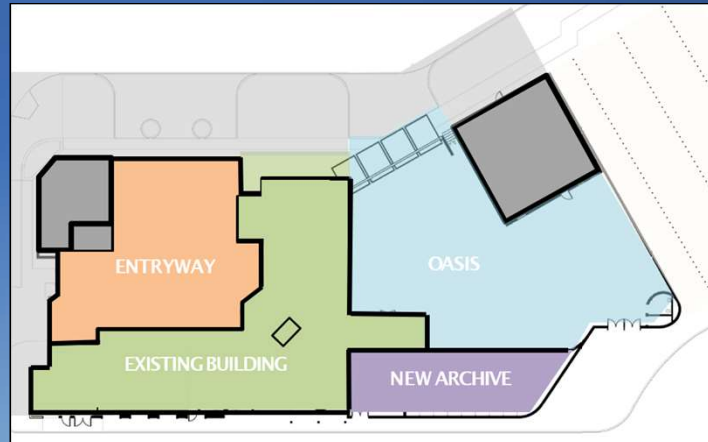
Project Goals

- Create a more welcoming and clearly defined museum entrance
- Improve museum flow and function
- Create an inviting outdoor space for small events, art opportunities, and educational workshops
- Expand and enhance archive space

54

Preliminary Design

- Schematic drawings
 - Museum entryway
 - Museum reconfiguration
 - The Oasis
 - New archive building



55

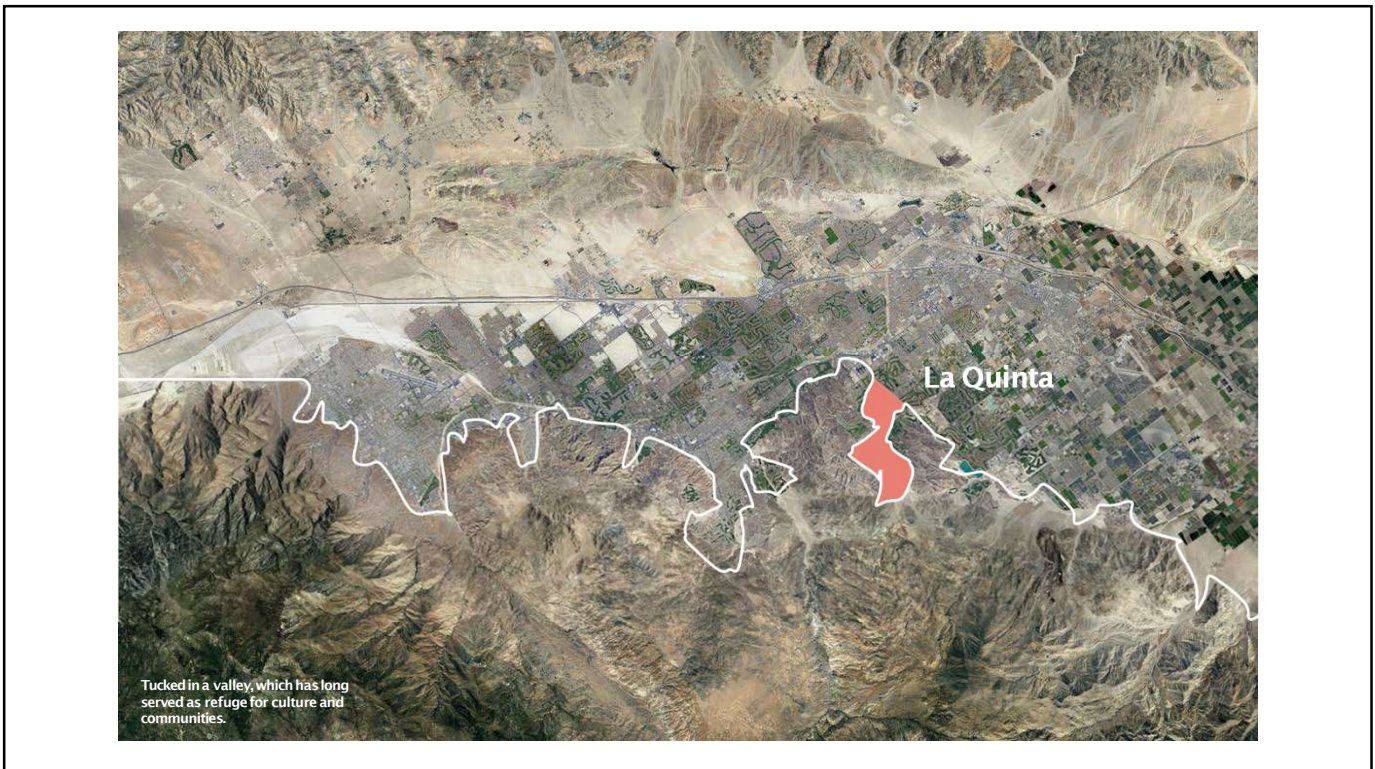
Contract Amendment

- Initial agreement for Phase 1 master planning was for \$457,300
- Amendment No. 2 allocates an additional \$16,250 for work HGA completed associated with Phase 2 of the project

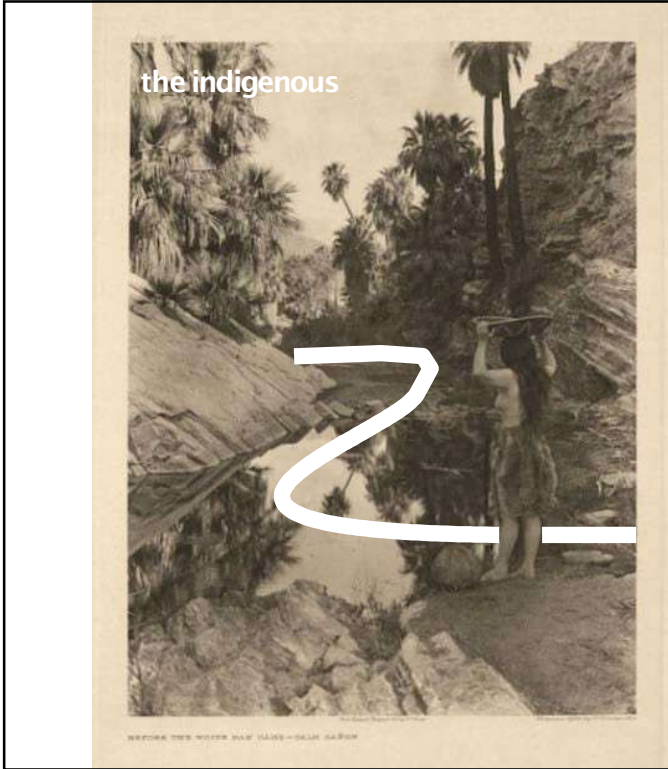
56



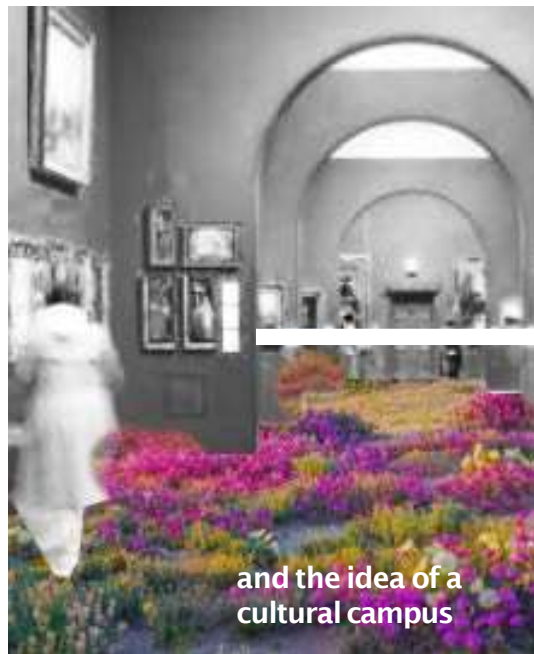
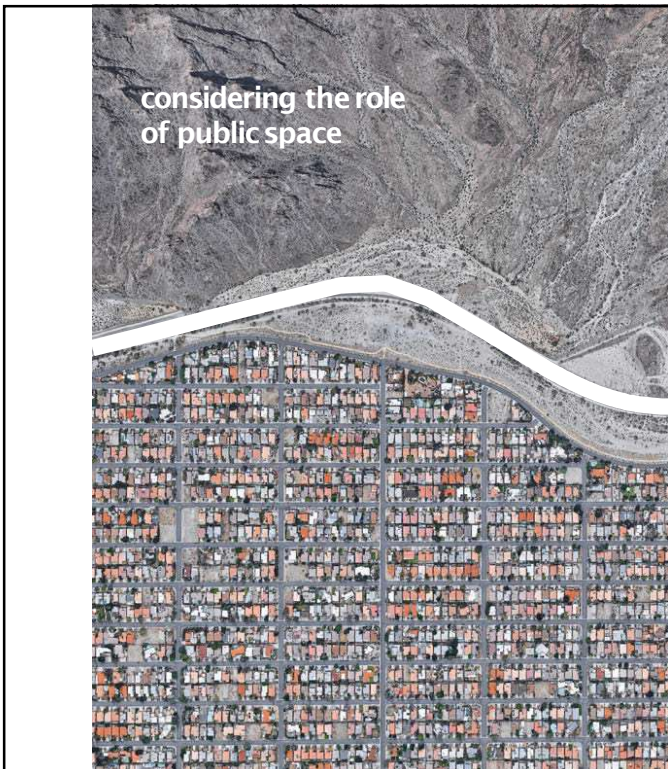
57



58



59



60

The project transforms what was once an outpost to a cultural Oasis

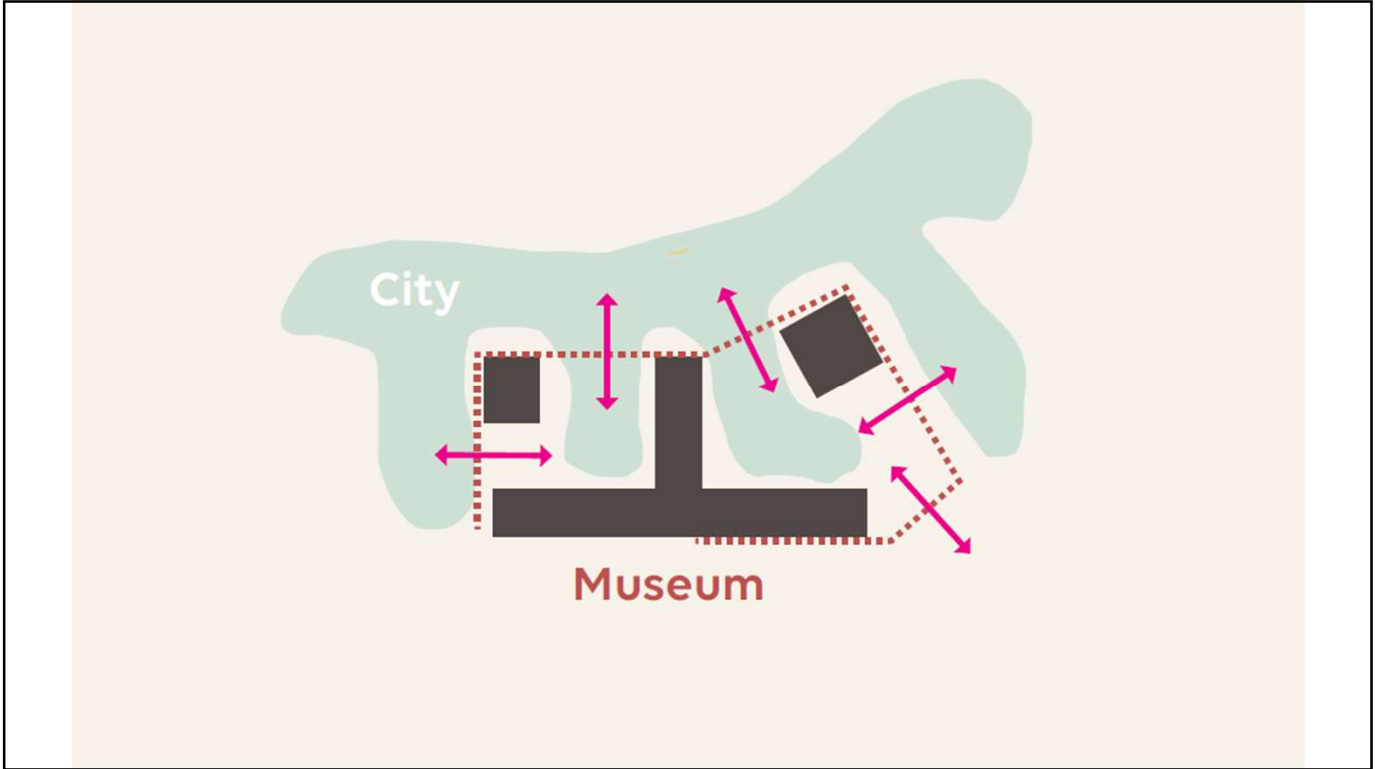


Aerial photo of past dated 1970, La Quinta

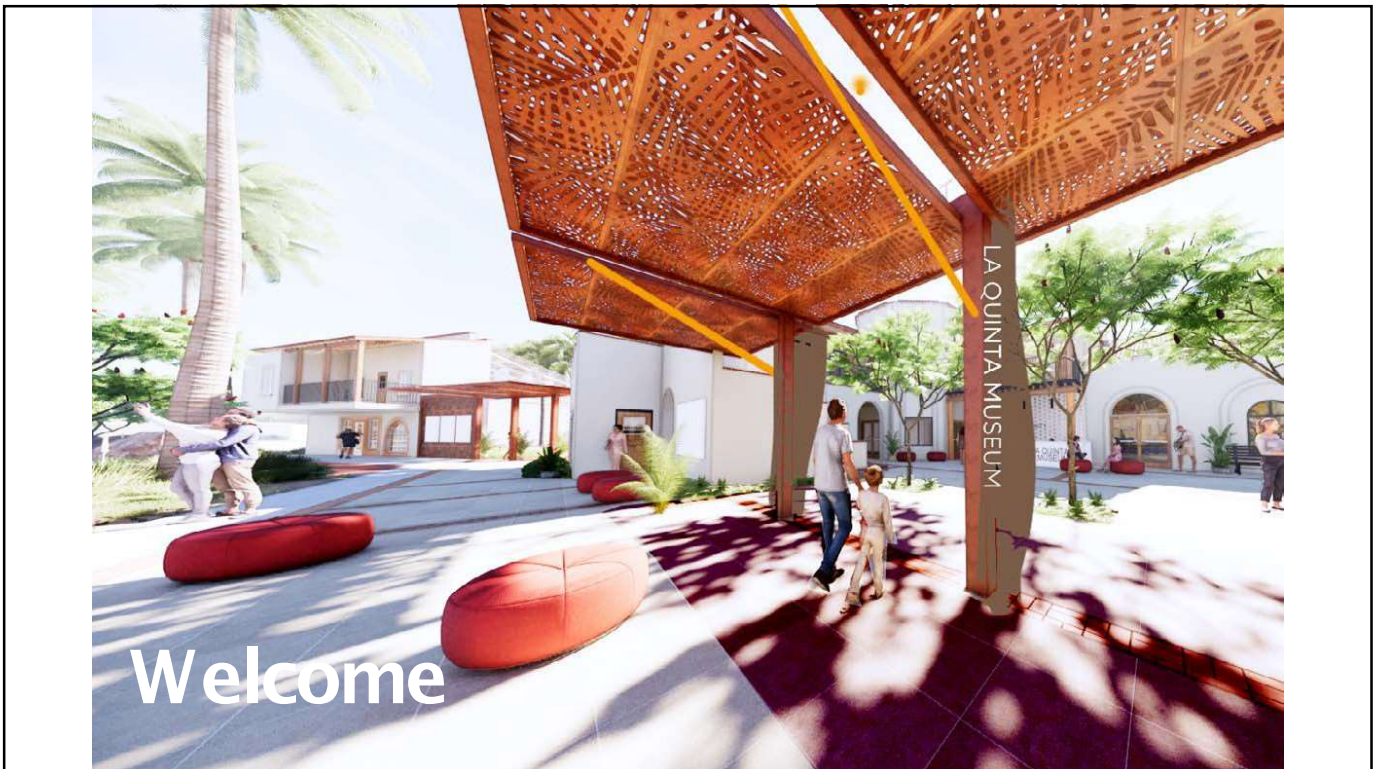
61



62



63



64

SummaryDescription

PRIMARY OBJECTIVES

- Improve Museum Flow and Function
- Expand and Enhance Archive/ Exhibit Amenities
- Activate neighboring areas to create cohesive campus
- Catalyze planning synergy with surrounding cultural assets
- Create anchor for arts destination with enhanced outdoor exhibits and space.

“Preserving the past, enriching the present and enhancing the future for all generations.”
 -La Quinta MissionStatement



65

SummaryDiscovery



The Cultural Campus plan embodies the Museum’s mission, guided by three lenses: Past, Present, and Future. Shaped through collaboration with stakeholders, including La Quinta representatives, Museum and Historical Society, and City Council, the plan integrates three realms: Past honors site’s history, Present addresses stakeholder needs, and Future projects aspirations for success. These lenses create a harmonious tapestry, weaving heritage, relevance, and innovation. The plan aims to create a transformative cultural destination, embracing the past, responding to the present, and envisioning a vibrant future.



Past
HERITAGE OF PLACE



Present
OPERATIONAL OPPORTUNITIES AND CHALLENGES



Future
AMBITIONS, EXPERIENCES, ENGAGEMENT, AND FLEXIBILITY

66

Summary Process Timeline

The City's acquisition of the Lumberyard Parcel and adjoining open lot necessitates short-term solutions and long-term planning. The process over the past year has been defined by three periods of work:

- Focus on open parcel
Jan 2022 - Sept 2022 | City Council 1
- Focus on Phase 1 and 2
Sept 2022 - March 2023 | City Council 2
- Refine/Develop/Conclude
March 2023 - June 2023 | City Council 3



DIAGRAM OF THE FUTURE PLAN DEVELOPMENT



DIAGRAM OF PROGRAM FOR EXISTING AND FUTURE PROJECT SPACES



RENDERING OF FUTURE ARCHIVE DESIGN

City Connections

The Museum and Lumberyard, though separate, unite in the Future Plan's vision of integrating the surrounding land to unlock future development possibilities. Strategic connections to the civic center, cove, and park shape this cohesive vision.

Cultural Campus

Although the Museum and Lumberyard are two discrete parcels. The Future Plan looks at the integration of land to the east and west in framing the potential for future development. Key Connections to the civic center, cove, and park guide the deliberate connections.

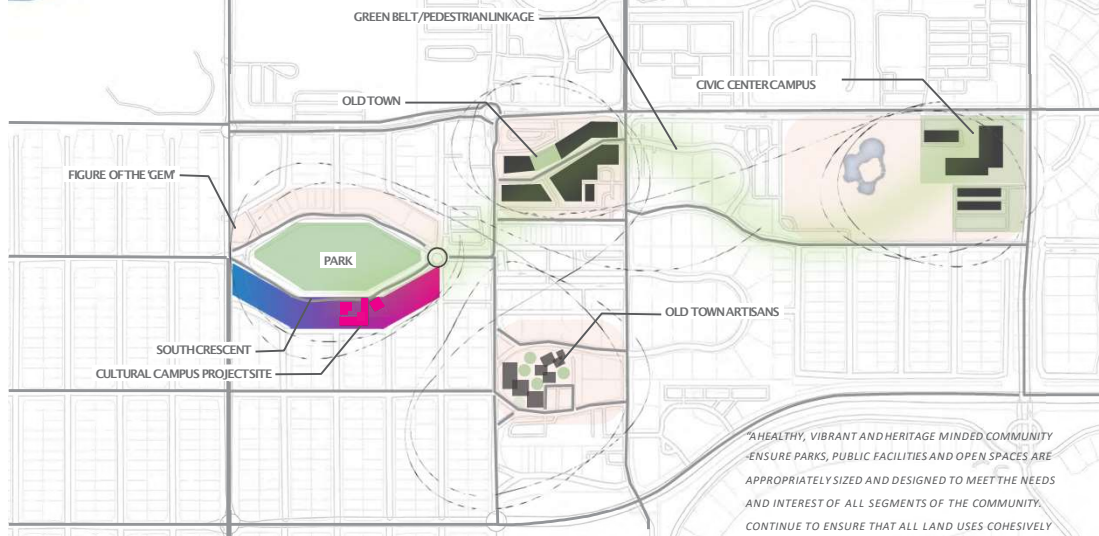
Phase 1 & 2

In the context of Phase 1 and 2 improvements, it is crucial to establish practical and attainable steps. This section focuses on enhancing the visitor experience, optimizing operations, and implementing expansion and modernization strategies for the museum and its landscape.

Design Guidelines

The final section breathes life into the Cultural Campus design, illustrating planning strategies and presenting aesthetic guidelines. It provides glimpses into the near and long-term future, envisioning the manifestation of the planning in all its vibrancy.

Urban Design Civic Connections



A Cultural Catalyst for Civic Connection

The Museum and its ability to guide the development of the surrounding areas will steward a new generation of city connections. As the City continues to develop its core, an integrated whole can be envisioned that advances the distinct character of the existing areas.

"A HEALTHY, VIBRANT AND HERITAGE MINDED COMMUNITY ENSURE PARKS, PUBLIC FACILITIES AND OPEN SPACES ARE APPROPRIATELY SIZED AND DESIGNED TO MEET THE NEEDS AND INTEREST OF ALL SEGMENTS OF THE COMMUNITY. CONTINUE TO ENSURE THAT ALL LAND USES COHESIVELY EXIST WITH THE AREA'S NATURAL, CULTURAL AND HISTORICAL HERITAGE"

-1 OF 8 COMMUNITY VISION GUIDING PRINCIPLES IN THE LA QUINTA 2034 GENERAL PLAN



Urban Design 'The Gem'



"GEM" INSPIRATION EXAMPLE IMAGERY

The long-term success of the Museum relies on the City's stewardship and transformation of a valuable, untapped area within its boundaries. Affectionately known as 'The Gem', this distinct hexagonal space features a central park and a museum located along a crescent to the south. As the City continues to analyze and comprehend the Cultural Campus within this context, the following recommendations are put forth for the development of the area.



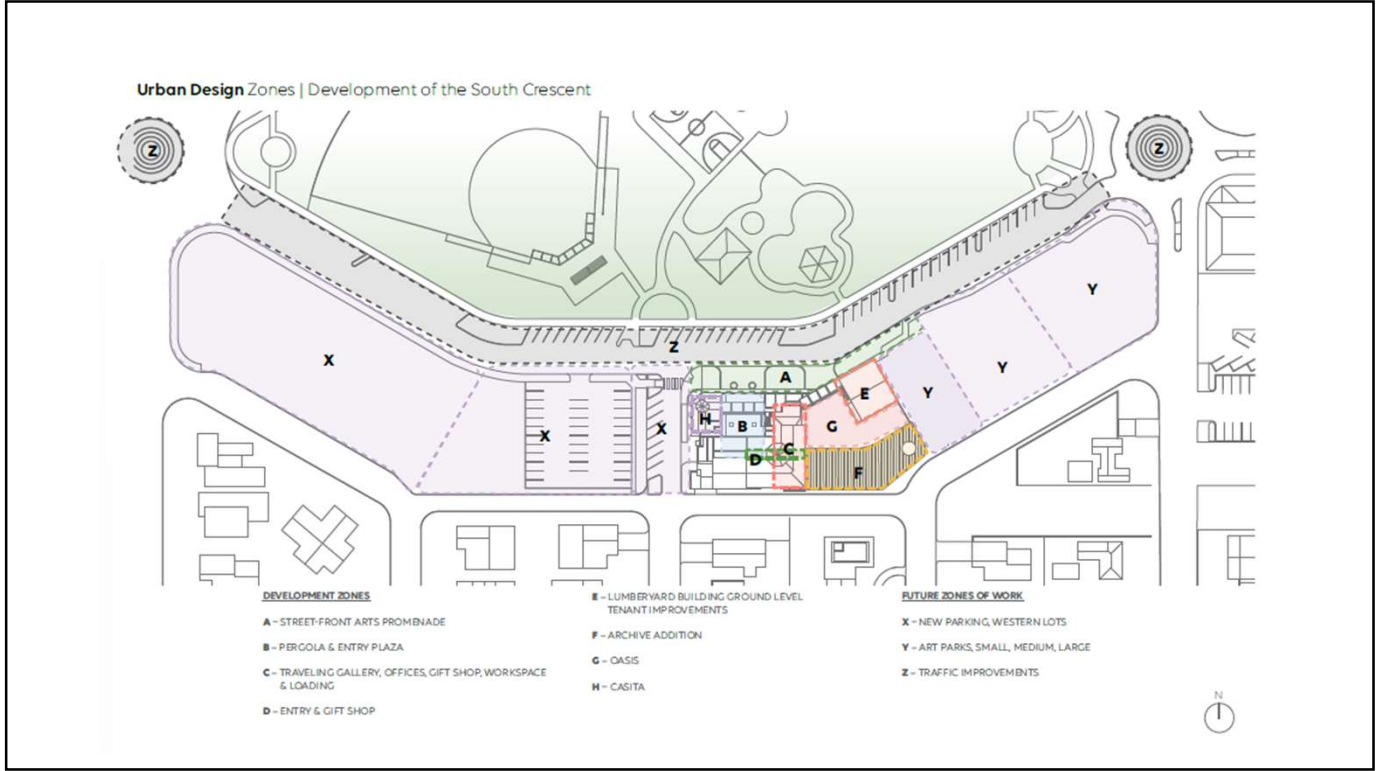
DIAGRAM OF THE FUTURE PLAN 'GEM' DEVELOPMENT

69

Urban Design Orientation | Development of the South Crescent & Cultural Campus



70



71



72

Urban Design Cultural Campus Zone Descriptions

FUTURE LANDSCAPE BASED VENUE

Envisioned as a gently sloped amphitheater- the far eastern edge of the site is predominately landscape, integrated native plantings shelter an interior open space for large group events.

TRAFFIC CONTROL

With two key temporary bollard locations remove vehicular traffic from the area so that larger festivals, or shows may be accommodated and take advantage of the new promenade in coordination with the park.



STREET FRONT DEVELOPMENT

Dedicated to a vibrant and active street front, planning principles encourage consistent setbacks to create cohesion through the whole South Crescent. With future development this area emerges as a linear park- thematic areas dedicated to the indigenous Cahulla and Contemporary Art can provide further definition for segments of the Promenade.

EXISTING BUILDING AND NEW ARCHIVE

In providing a vision for the future build out of the eastern half of the 'Crescent'-we can more intentionally view the phase 1,2, and 3 pieces as they build upon one another toward a ideal future.

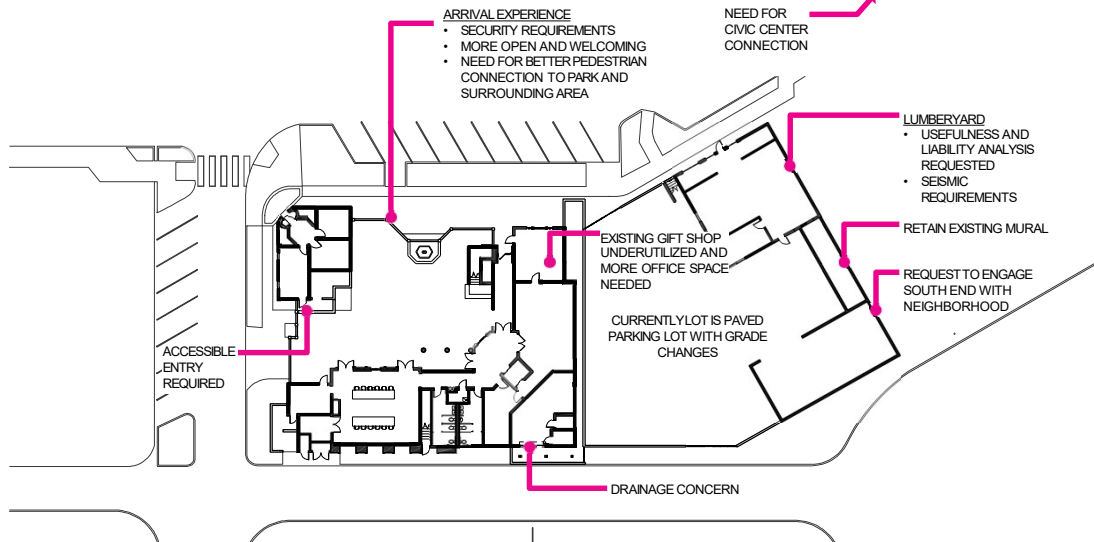
CASITA CAFE

The historic structure, held in reserve as light storage in early phases, can be converted to a cafe. To accompany the development of the street front and South Crescent this program can further support vibrant pedestrian focused activity.

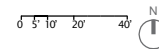
FUTURE PARKING

In order to continue to provide public space opportunities along the northern edge of the Crescent- vehicular traffic is loaded to the south of the sites. Solar Trillises capture renewable energy and shade the cars.

Cultural Campus Existing Conditions/Observations



*NOTE FOR THE PURPOSES OF THE PLANNING EFFORT THE SECOND FLOOR OF THE EXISTING MUSEUM HAS BEEN EXCLUDED FROM STUDY. THIS IS IN PART DUE TO THE RECENT SUCCESS IN THE REPOSITIONING OF THE PERMANENT EXHIBITIONS, AND THEIR UTILIZATION. ALSO THIS IS CAPPED DUE TO THE ANTICIPATED FUNDING FOR THE PROJECT.



Cultural Campus Historic Structures Assessment



Casita

Description: The Casita, built in 1935, has a total area of 964 gross square feet (GSF).

Challenges: The Casita presents challenges related to ADA compliance, structural integrity, and size limitations.

Use Considerations: Considering the accessibility and cost concerns, it is advisable to utilize the Casita for light signage and landscaping purposes. Additionally, it can continue to serve as a space for the La Quinta Historical Society, without significant renovation work.

Recommendation: The Casita can be utilized for light storage by the La Quinta Historical Society or the museum. It is recommended to upgrade landscape lighting while incorporating signage and wayfinding enhancements. Furthermore, the Casita could be considered for non-public event support, providing additional flexibility in its usage.



Lumberyard

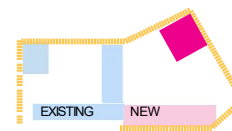
Description: Built in 1935, the Lumberyard encompasses 3360 gross square feet GSF (total including both floors).

Challenges: The Lumberyard presents challenges related to ADA compliance, structural integrity, overhang issues, and size limitations.

Use Considerations: Considering the structural, cost, and accessibility concerns, it is recommended to utilize only the first floor of the Lumberyard. This space can be used for activities such as education programming or event support.

Recommendation: Implement light tenant improvements (TI) on the ground floor, specifically for event support in the oasis or small community engagement activities. Additionally, explore the possibility of utilizing sidewalk windows for exhibitions and displays. It is advised to demolish the back shed structure and refrain from using the second floor due to structural and accessibility limitations.

*NOTE: Full demolition of entire building may also be considered to allow greater use of site and/or additional support spaces for future cultural events or museum use



75

Cultural Campus Improvement Strategies

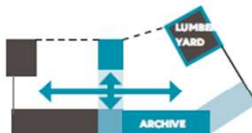
ARRIVAL EXPERIENCE



**ARTS PROMENADE
Animated Streetfront**

Activate the streetfront and create a clear inviting arrival. Define a new perimeter and enhance connectivity and identity with the museum's surroundings. The promenade unites pedestrian movement and collects visitors who arrive by car.

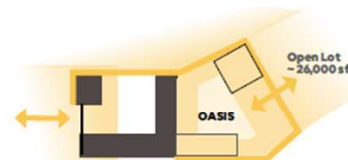
OPERATIONS



**SWITCH AND STITCH
Internal Connections**

Create connection to the expanded property through an internal stitch and exterior penetration into the oasis. Complement this easterly expansion with back of house expansion potentials focused at the south of the site. Consolidated line of sight and compression of arrival, gift, way-finding, and hospitality elements.

EXPANSION

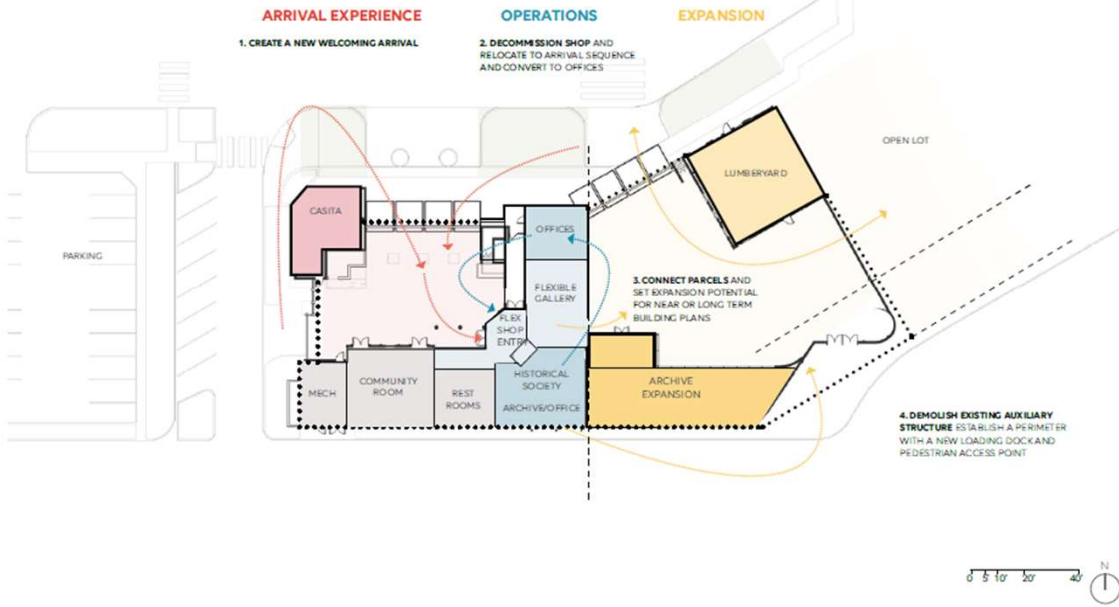


**FRAME, UNIFY AND FLEX
Edge Definition**

A consistency to the current open areas through fences, and screens that move and rotate, providing entry and security, allows the eclectic nature of the collected campus structures to co-exist in a cohesive frame.

76

Cultural Campus Musical Chairs - New Operations and Archive



77

Cultural Campus New Function and Flow



78



79

Arrival Experience Existing Conditions



EXISTING. The current arrival (shown in the upper right photograph) is primarily designed for vehicular access, prioritizing vehicles over the pedestrian arrival experience.

REPOSITIONED ARRIVAL: Enhance the Pedestrian Experience. Concentrate leisure activities, landscape features, and human-scale elements in the inner area of the hexagon. Relocate parking to a decomposed gravel lot at the side while ensuring ADA accessibility with immediate access. Create a clear and engaging arrival experience.

UNIFY AND FOCUS: Establish a cohesive visitor experience by implementing an elevation hierarchy, activating streetfronts, and designing a promenade. Strengthen the visual connection between different elements to guide visitors.

PROMENADE DEVELOPMENT: Incorporate shaded areas along the promenade through strategic planting, offering relief from the sun. Introduce human-scale elements that contrast with the towering palms, creating a more intimate and welcoming atmosphere.

80

Arrival Experience New Streetfront Welcome



81

Arrival Experience Arts Promenade

Imagining a Narrative & Interactive Landscape

The intention to incorporate heritage, narrative, and experiential elements from the Valley's Cahuilla past finds presence in the concept for the landscape. The idea begins with the linear Arts Promenade, and has the ability to populate other areas of the campus plan as the idea refines.

Through the utilization of the array of street front elements: planting, pathways, areas for seating, shade trees, low plantings, could we envision the garden designed through a narrative framework of an ancient Cahuilla Story? How does it begin, how does it end, how do you engage and when is it legible? The story itself, like in typical interpretive, or ethnobotanical setting (Maliki Museum, La Brea Tar Pits) can be engaged on a number of levels. Simply as an pleasant, passive landscape at arrival or a rich discovery animated through signage, or a scavenger hunt like codex.

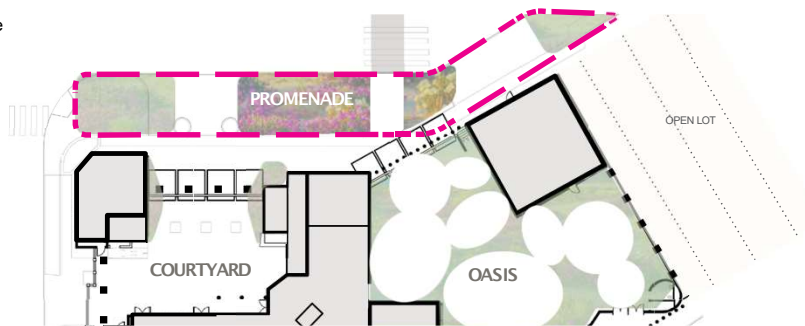


DIAGRAM OF PROMENADE - REMOVAL OF STREET FRONT PARKING EXPANDS SCOPE OF ARRIVAL



AN EXPERIENCE SHARED BY YOUNG AND OLD



REFERENCE BOOK FROM MALIKI MUSEUM



A SCAVENGER HUNT THAT REVEALS AN ANCIENT FABLE



ASPECTS OF THE GARDEN COULD BE SAFELY EDIBLE, FURTHER ENGAGING SENSES.

82

Arrival Experience Kinetic Pergola



DESIGN INSPIRATION - FLOWERS OPENING AND CLOSING IN RESPONSE TO SUNLIGHT



At the entrance of the existing courtyard and new Oasis, there will be a kinetic pergola which would open and close depending on the operating hours and events in each space. When open, the surface which was previously a security barrier would act as a shade canopy creating a porous and welcoming entry. The inspiration for this concept was desert flowers, which often during the day with the sun and close at night.

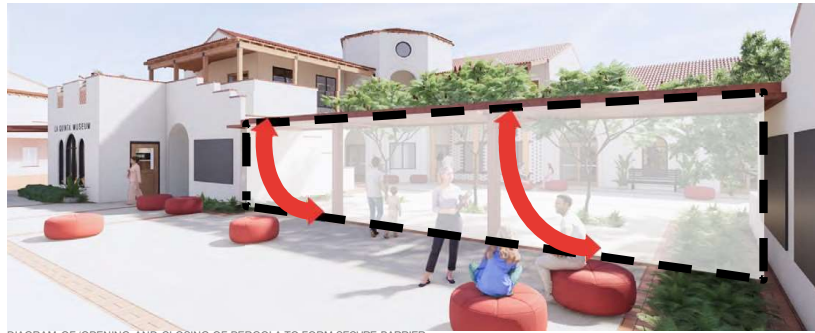


DIAGRAM OF OPENING AND CLOSING OF PERGOLA TO FORM SECURE BARRIER

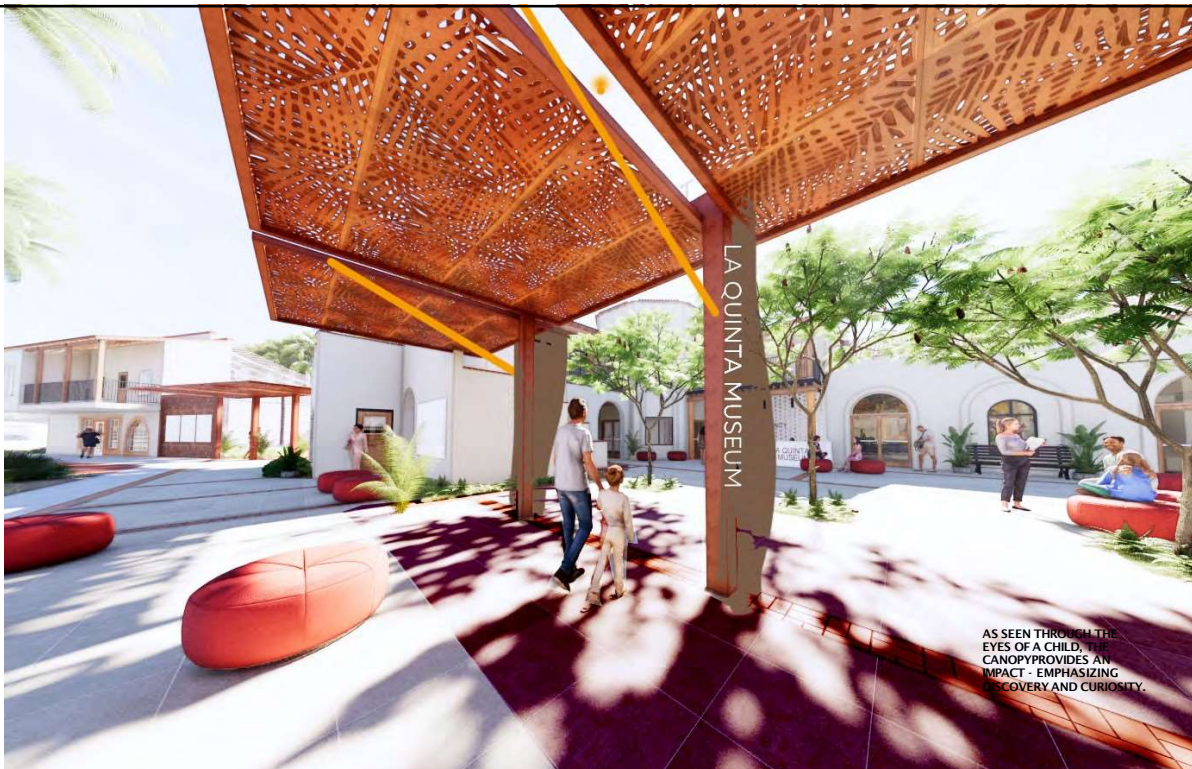


MATERIAL PALETTE EXAMPLES



PRECEDENT IMAGERY

83



AS SEEN THROUGH THE EYES OF A CHILD, THE CANOPY PROVIDES AN IMPACT - EMPHASIZING DISCOVERY AND CURIOSITY.

84

Operations Courtyard Entry, Reception, and Shop Improvements

Currently the gift shop sits at the north end of the existing building. Feedback from the users is that it could be condensed and would be more efficient to have overlap for the staffing of the shop with the welcome desk. Therefore the design team came up with the solution of moving the gift shop from its current location to the elevator lobby. It would be made into a gift kiosk with custom casework furniture to showcase the souvenirs and other items currently showcased at the gift shop. It would also act as a welcome desk for visitors.

Additionally the main wall which faces the entry point in the existing courtyard would act as a key point of identity for the space. This could be done through commissioning a mural or custom signage which would inhabit the main wall. This would serve as a unique backdrop for events and create a more welcoming arrival for the space.



AXON OF ARRIVAL WELCOME CENTER



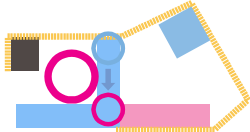
RENDER OF EXAMPLE MURAL/SIGNAGE AT MAIN ARRIVAL



MULTIUSE SIGNAGE POSITION AS FURNITURE



EXAMPLE OF CUSTOM GIFT SHOP CASEWORK



SIMPLY SALES

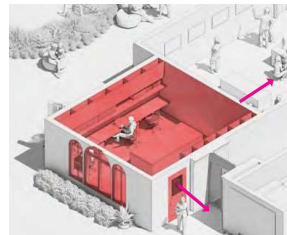


RENDER OF EXAMPLE GIFT SHOP KIOSK AT ENTRANCE

85

Operations Street front Gift Shop to Office Conversion - Interior Improvements

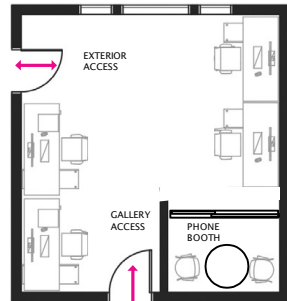
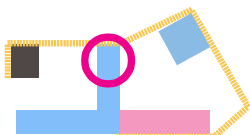
Once the gift shop is condensed and moved to the current elevator lobby, there is room for the space to become offices for the artifact researchers. This would include an interior retrofit of the space, replacing finishes and lighting to accommodate 4 research teams and a small phone booth. Additionally the benefit of the location of this space is the adjacency to the traveling gallery access to the south of the room. This allows for researchers to have quick and easy access to the gallery and its artifacts.



AXON OF SHOP TO OFFICE CONVERSION



EXISTING RETAIL SHOP



FLOOR PLAN OF SHOP TO OFFICE CONVERSION

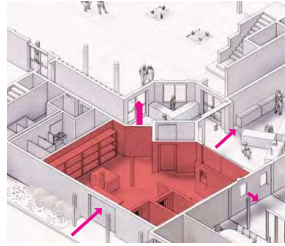


RENDER OF POTENTIAL RETAIL SHOP CONVERTED INTO OFFICES

86

Operations Back of House Workspace - Interior Improvements

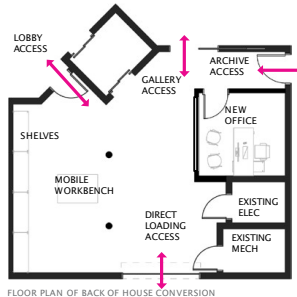
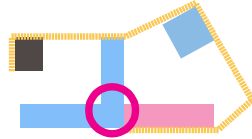
The back of house workspace and archive currently acts as storage and loading area for artifacts. The space is divided up into several small spaces with non structural partitions which makes much of it hard to use. The plan is to demo out some of those partitions and create one large space which would be more open and efficient for loading and storing materials. This back of house space would also include a small office for the Historical Society to use as a workspace. The location of this office has the benefit of having close adjacency and access to the artifacts. There will be also be direct internal circulation routes from this back of house space to the traveling gallery, new archive and front of house lobby area.



AXON OF BACK OF HOUSE CONVERSION



EXISTING BACK OF HOUSE



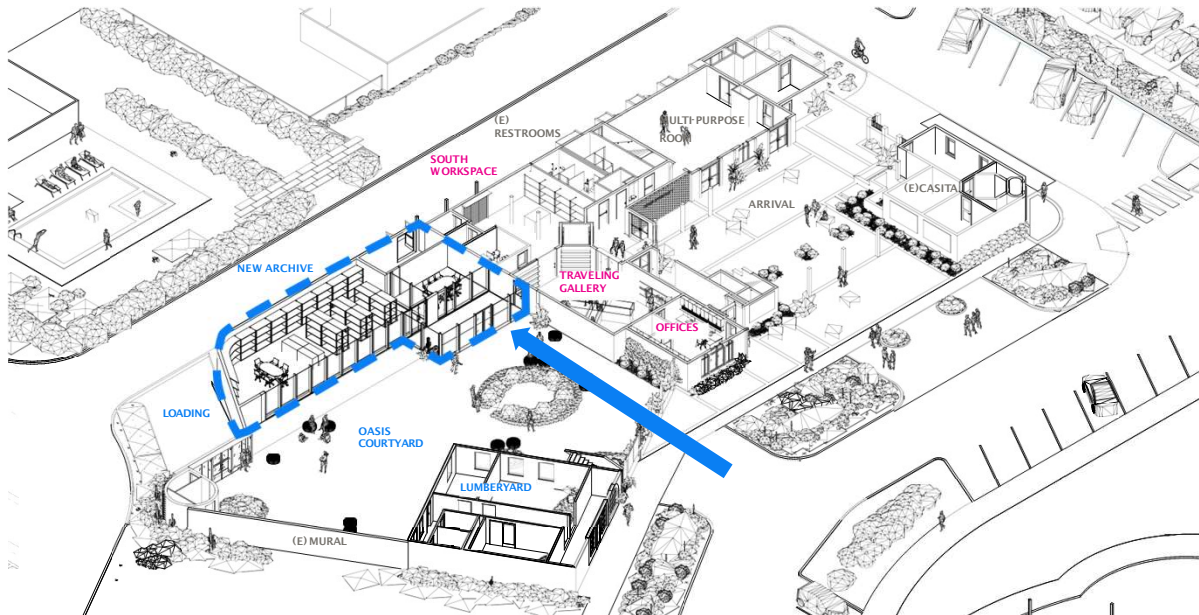
FLOOR PLAN OF BACK OF HOUSE CONVERSION



RENDER OF POTENTIAL BACK OF HOUSE RENOVATIONS

87

Expansion New Archive Design



88

Expansion Oasis Cultural Courtyard



89

Expansion Existing Lumberyard

The existing Lumberyard building to the northeast of the existing museum is currently unoccupied. As it was originally built in 1935 it is one of the older buildings on site. This means it is part of the history of the site but also means that significant rework may be needed to rehabilitate the building.

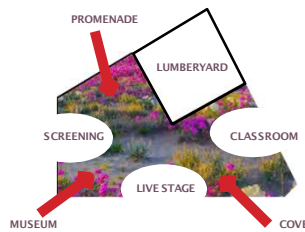
Due to its proximity to the future Oasis, the design team saw the Lumberyard building as a potential opportunity to house event serving spaces.



EXISTING LUMBERYARD



IMAGINE a condition restored to a native, wild character - stories along the street and an intimate enticing oasis on the courtyard.



ACTIVE & PASSIVE

CARVED with pockets of distinct size and shape for a variety of specific uses, yet tied together seamlessly for simultaneous occupation.



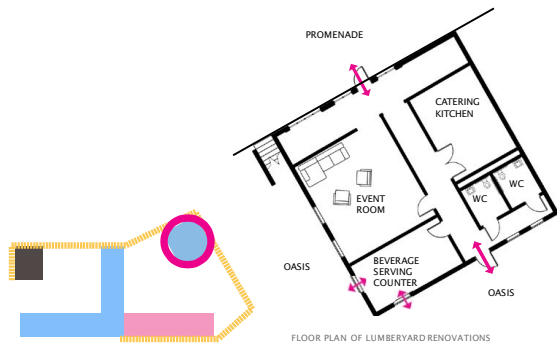
90

Expansion Lumberyard GroundLevel Renovation

In the event the project moves forward to include the rehabilitation of the Lumberyard building, it will serve as an extension of the Oasis as host a variety of programs to help serve the outdoor area. In addition to rehabilitation such as updating finishes, outlets etc (see cost estimate and basis of design sections for more information), this scope would include interior renovations which aid it better serving the exterior multi-function spaces. These renovations include creating two ADA unisex single occupancy restrooms, a catering kitchen, an event prep room, and a beverage serving counter.



EXISTING CONDITION OF SITE OF FUTURE OASIS - BETWEEN MUSEUM AND LUMBERYARD



91

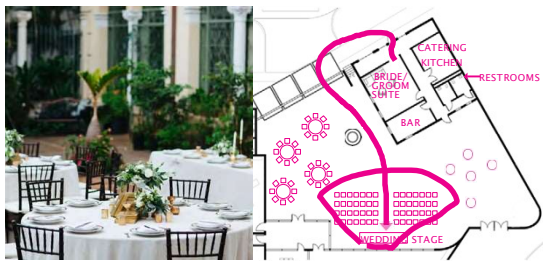
Expansion Oasis Multi-Purpose Diagrams



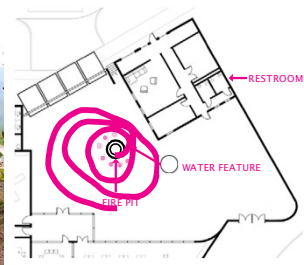
EXAMPLE OF OUTDOOR FIRE PIT

The Oasis outdoor space will serve as a community hub, and will be flexible and open to a variety of uses and group sizes including weddings, outdoor movie night, and an outdoor education center.

It will consist of a variety of planting and hardscape and include projection wall, a fire pit and water feature to help host events.



EXAMPLE OF OUTDOOR EDUCATION CENTER PROGRAM



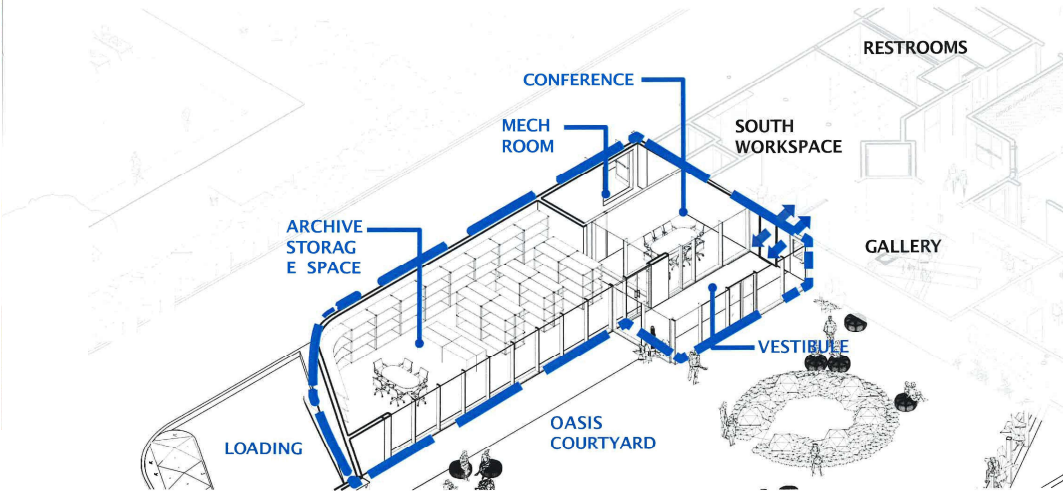
92

Expansion ArchiveDesign



93

Expansion Archive Design - zoomed in



94

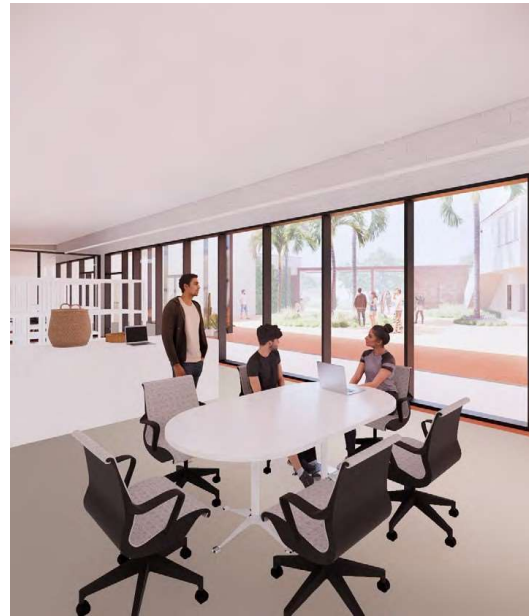
Expansion New Archive Design

A major design driver for the archive was the concept of research on display. This was manifested through celebrating the active artifact research and study on site through creating visual connection and adjacency between the New Archive building and the Oasis. Through the building and the public space being in close proximity and visually connected the storage could act as part storage and part active research and an extension of the museum's display. Part of this concept could extend into public workshops or community outreach events where researchers could walk the public through what they are working with. This could lead to future donor events or other collaborations.

It is important to note although the research and public Oasis programs would be in close proximity and visually connected they would be separated through card access, doors and an environmental vestibule which would ensure that outside air and dirt and debris would not be tracked into the space.



EXAMPLE OF RESEARCH ON DISPLAY AT LA BREA TAR PITS



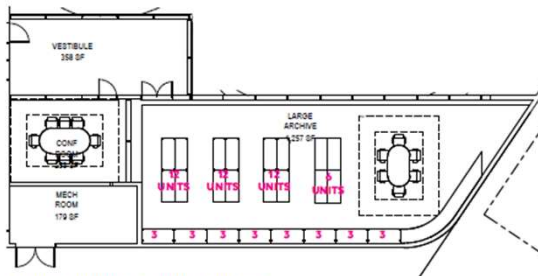
RENDER OF ARCHIVE LOOKING OUT TOWARD OASIS

95

Expansion Archive Design

After analyzing the content as specified by the owner and creating an estimated volume for each type of artifact. The design team came up with a "shelf storage unit" which was a set dimension (60"x24"x24") and analyzed how many of these "shelf units" would be needed to accommodate

each volume required by the artifacts listed. This was used to estimate approximate storage capacity of a building area.



EXAMPLE OF SHELF UNIT LAYOUT AND COUNT IN NEW ARCHIVE

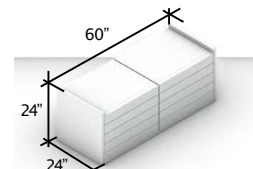
NAME	# OF ITEMS	APPROXIMATED DIMPER OBJECT (IN³)	TOTAL VOLUME PER OBJECT (FT³)	# OF SHELF UNITS REQUIRED	# OF SHELF X 25% ADDITIONAL UNITS
PHOTOS	750	18X16X0.25	32	2	3
BOOKS	700	8X6X2	39	2	3
OBJECTS	800	12X12X12	800	40	50
ARTIFACTS	675	12X12X0.25	14	1	1
TOTL				45	56

CALCULATION ASSUMPTIONS FOR CALCULATING ARCHIVAL SHELF VOLUME REQUIRED

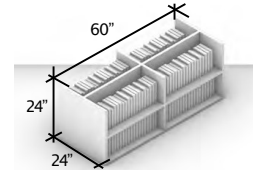
A MODULAR AND FLEXIBLE APPROACH FOR STORAGE OF A WIDE RANGE OF ITEMS



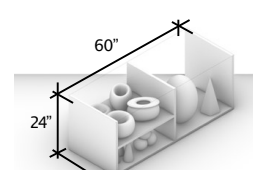
SMALL - PULL OUT PHOTO AND DOCUMENT DRAWER SHELF UNIT



MEDIUM - OPEN BOOK



LARGE - OPEN ARTIFACT SHELF UNIT



96

Guidelines Architectural Materials and Character



RENDER OF PROJECT FROM PROMENADE



RENDER OF ARCHIVE FROM OASIS

The current museum facilities are made of plaster, terracotta roofing, accents of wood. Generally they follow principles of historic 'Spanish' architectural precedents.

The added facilities should compliment this palette and character- but should not be bound to proscriptive recreation.

The contemporary additions in the views harmonize with the tone and hue of the existing structures but update them through materiality.

- Masonry
- Perforated Metal (Copper)
- Glass



EXAMPLE OF ARCHITECTURAL MATERIAL PALETTE

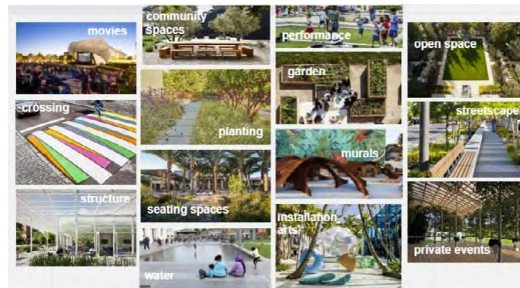


RENDER OF COPPER KINETIC CANOPY

97

Guidelines Landscape Materials and Character

The landscape design will be naturalistic and be comprised of mostly native, desert chaparral vegetation. All vegetation will be drought tolerant and well suited for the hot arid environment of La Quinta. Many of the plants used will be selected based on their integration with the Cahulla traditions and history. The idea is for the landscape to provide both an aesthetically pleasing environment as well as a educational and learning opportunities for the public. The hardscape for the promenade and Oasis will consist of decomposed granite and concrete pathways. The main idea for the shape of the hardscape and planting is to allow for flexibility and a variety of uses.



EXAMPLE OF LANDSCAPE RELATED SPACES/PROGRAMS



EXAMPLE OF LANDSCAPE MATERIAL PALETTE



EXAMPLE OF LANDSCAPE MATERIAL PALETTE

98

Guidelines Signage, Wayfinding, and Lighting



DONOR WALL

ENHANCED SHADE FOR STAYING

PLAYFUL OPPORTUNITIES FOR GATHERING

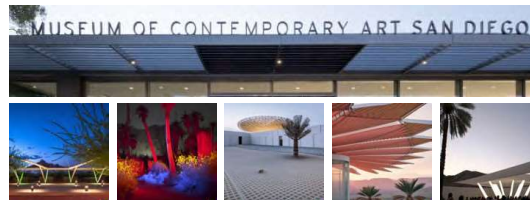
INTEGRATED TECHNOLOGY



IDENTITY
use of signage, lighting or art installation to create character and a sense of identity for the site



HISTORIC STRUCTURE
subtly transform and upgrade presentation of historic structures as physical artifacts, playfully animals.



LIGHT AND SHADE
Integrate signage and lighting into shade canopies so they are multifunctional and work to provide wayfinding, shade and ambiance.

Guidelines Public Art Integration



As part of the Future Plan, the parcels to the east of the current museum and new archive/oasis could be designated as an outdoor public space with public art integrated throughout as a way to connect the existing courtyard, new oasis and the future park.

There is already a large elaborate mural adjacent to the lumberyard which serves as an excellent precedent and example of ways to engage with local artist and incorporate public art into the project.



EXAMPLE OF CAHUILLA ARTIST GERALD CLARKE'S WORK



SNAPSOTS OF THE EXISTING MURALS ADJACENT TO THE LUMBERYARD



SNAPSHOT OF EXISTING MURAL ADJACENT TO LUMBERYARD



EXAMPLE OF CAHUILLA ARTIST GERALD CLARKE'S WORK AT DESERT X

Guidelines Sustainable Design



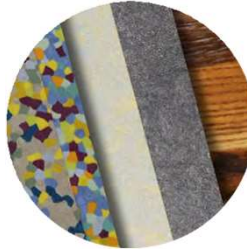
EQUITABLE COMMUNITIES

- CAHUILLA TRIBAL CONSULTANT
- ITERATIVE DESIGN PROCESS WITH COMMUNITY OUTREACH
- ENGAGE LOCAL ARTIST AND ARTISANS



LANDSCAPE

- REDUCE WATER USE
- LOW FLOW FIXTURES
- NATIVE/DROUGHT TOLERANT PLANTING PALETTE
- MINIMAL AND EFFICIENT DRIP IRRIGATION
- PLANTING TO PROMOTE NATIVE WILDLIFE AND BIODIVERSITY



MATERIALS

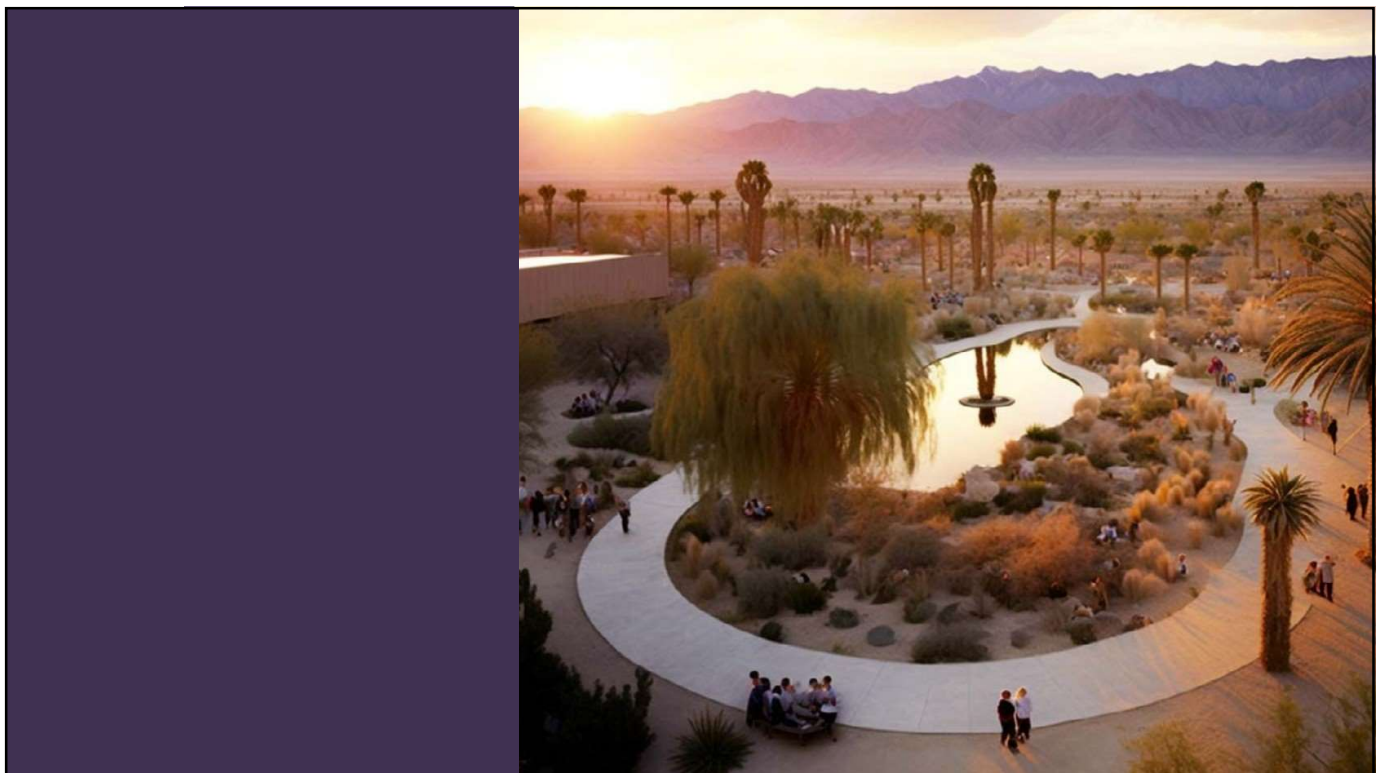
- LOW EMBODIED CARBON
- LOCALLY SOURCED AND NATURAL MATERIALS WHEN POSSIBLE
- HIGH ALBEDO - HEAT REFLECTING/REDUCING
- LOW VOCs - GOOD INDOOR AIR QUALITY
- DURABLE - LONG LASTING



ENERGY

- BUILDING ORIENTATION
- ADD ALT - RENEWABLE ENERGY - PV ON SITE
- OPTIMIZE DAYLIGHT USE TO REDUCE LIGHTING NEEDS
- USE ENERGY EFFICIENT LIGHTING AND HVAC EQUIPMENT

101



102

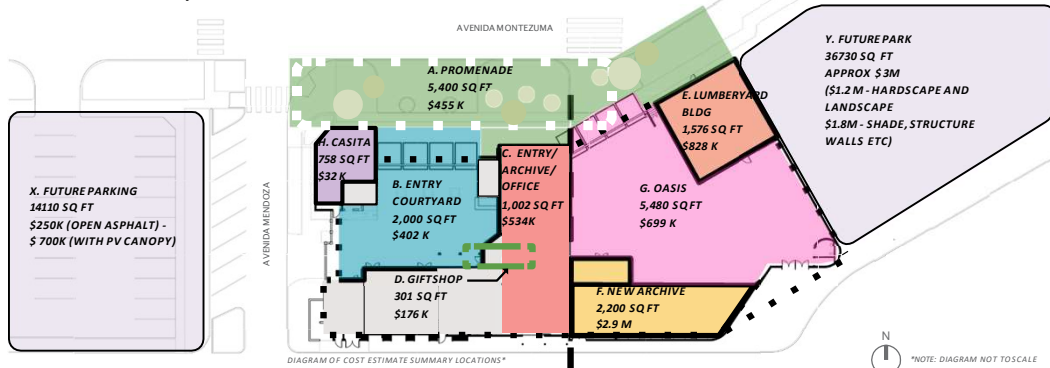


103



104

Cost Estimate Summary

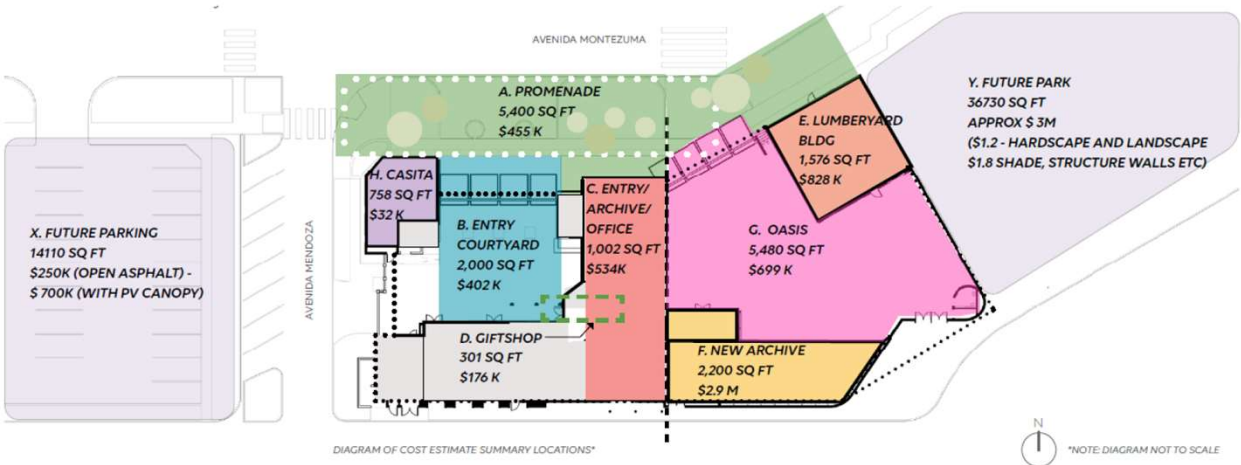


	Green	Blue	Red	Light Green	Orange	Yellow	Pink	Purple	
TOTAL AREA	5,400 sqft	2,000 sqft	1,002 sqft	301 sqft	1,576 sqft	2,200 sqft	5,480 sqft	758 sqft	
TOTAL CONSTRUCTION COST	\$455,231	\$402,730	\$534,050	\$916,012	\$828,703	\$2,908,742	\$699,699	\$32,584	\$6,216,352
TOTAL PROJECT COST	\$601,231	\$515,753	\$692,831	\$232,981	\$1,070,562	\$3,776,178	\$910,832	\$40,030	\$7,860,639
ALTERNATE SCOPING OPTIONS (not included above)									
Maint of existing building	\$10,000								
Art/Sculpture on Promenade & Quad	\$40,000								
Photovoltaics on new Archive Bldg									
New restroom at Oasis/Archive					\$10,000				
Lumberyard structural upgrades					\$100,000				
LUMBERYARD - STRUCTURAL UPGRADE + RENOV					\$2,970,842				
Drama					\$60,000				
Site Prep and restoration					\$50,000				
New building					\$139,600				
Project costs					\$40,000		\$40,000		
LUMBERYARD BUILDING DEMO + RENOV					\$5,000,000				

*NOTE: DIAGRAM NOT TO SCALE

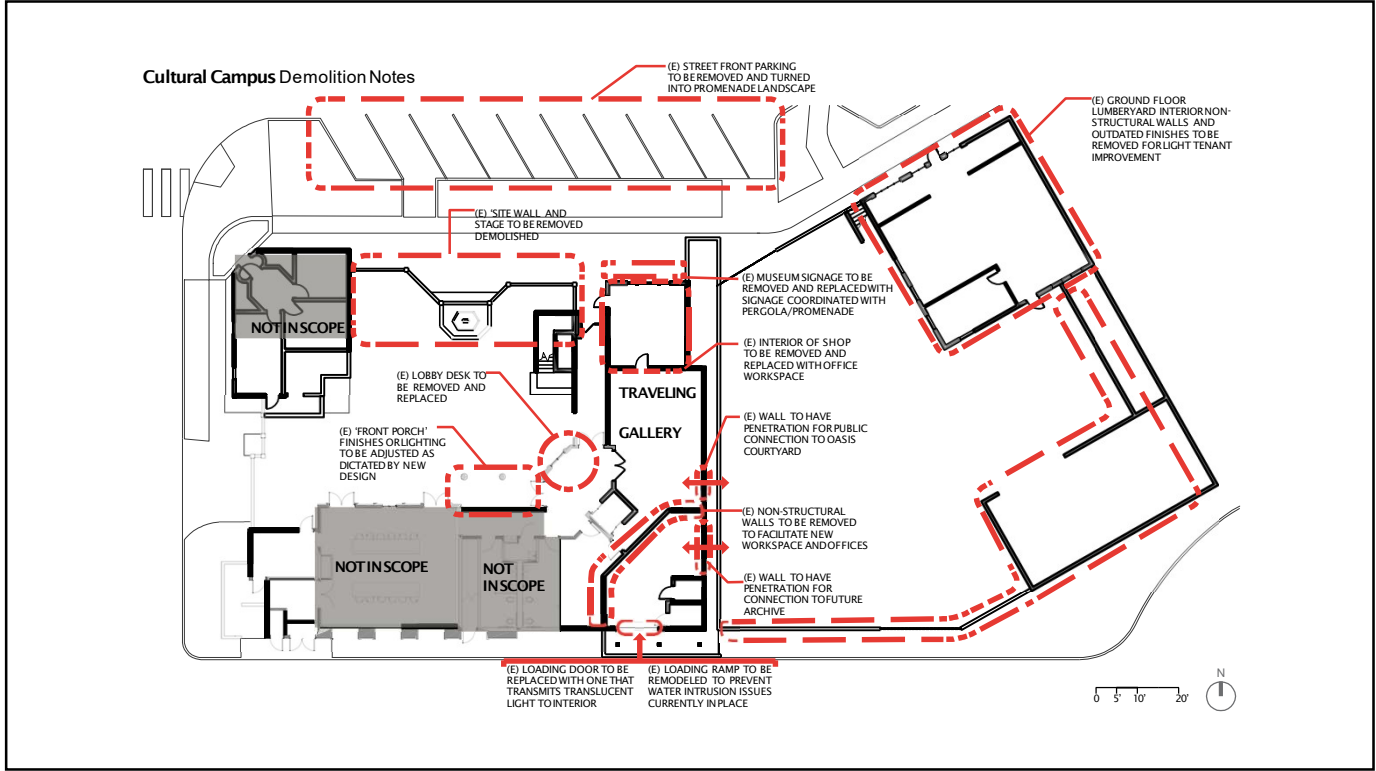
**NOTE: TOTAL CONSTRUCTION COST INCLUDES: CONSTRUCTION MATERIALS, LABOR, CONTINGENCY AND ESCALATION
 ***NOTE: TOTAL PROJECT COST INCLUDES PROFESSIONAL DESIGN SERVICES, TESTING, FURNISHINGS, TECHNOLOGY AND CONTINGENCY

105



*NOTE: DIAGRAM NOT TO SCALE

106



109



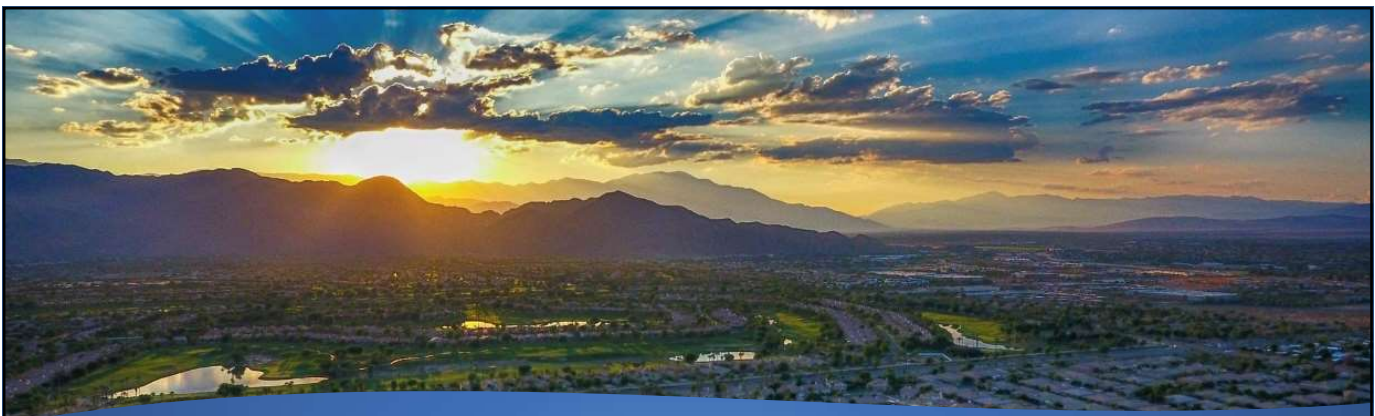
110

City Council Meeting July 18, 2023

B2 – 2021/22 Annual Comprehensive Financial Report (ACFR)



111



Audit Summary

- ✓ Conducted virtually by Eide Bailly LLP, Certified Public Accountants from October 2022 – June 2023
- ✓ Reviewed nearly 800 documents & conducted several interviews
- ✓ Issued a clean audit opinion – most favorable conclusion
- ✓ All new financial regulatory requirements have been implemented
- ✓ ACFR meets the GFOA's Certificate of Achievement Program's requirements and has been submitted for another certification

112

ACFR Content

Major Events

- Transmittal letter
- Management Discussion and Analysis (MD&A)

Financial Statements

- Balance sheets, statement of net position & cash flows
- Budgetary comparison schedules

Summaries & Charts

- 21 Notes
- Statistical section, 10-year comparison

113

Statement of Net Position



Category	Amount
Capital Assets	560,188,798
Restricted	54,412,358
Unrestricted	191,655,157
Total	\$ 806,256,313

114

Governmental Fund Balances

Category	General Fund	All Other Funds	Total Funds
Non-Spendable	\$ 27,365,989	\$ 96,590	\$ 27,462,579
Restricted	10,137,888	54,412,358	64,550,246
Committed	37,209,100	-	37,209,100
Assigned	57,300,711	-	57,300,711
Unassigned	33,893,325	(3,293,897)	30,599,428
Total	\$ 165,907,013	\$ 51,215,051	\$ 217,122,064

Prepaid Costs	\$ 46,990	Pension Trust	\$ 10,137,888
Land held for resale	5,403,652	Housing Funds	24,015,857
RDA Loan	21,915,347	Restricted Funds	30,396,501

115

Governmental Fund Balances

Category	General Fund	All Other Funds	Total Funds
Non-Spendable	\$ 27,365,989	\$ 96,590	\$ 27,462,579
Restricted	10,137,888	54,412,358	64,550,246
Committed	37,209,100	-	37,209,100
Assigned	57,300,711	-	57,300,711
Unassigned	33,893,325	(3,293,897)	30,599,428
Total	\$ 165,907,013	\$ 51,215,051	\$ 217,122,064

Natural Disaster	\$ 10,000,000	Fire Services	\$ 11,183,821
Economic Disaster	11,000,000	Sales Tax (Measure G)	15,355,043
Cash Flow Reserve	5,000,000	Capital Projects	30,761,847
Capital Replacement	10,000,000		
Operational Carryovers	1,209,100		

116

Long-Term Debt

Debt Type	2020-21	2021-22
Leases	\$ 295,942	\$162,648
Financed Purchases	41,225	22,079
Compensated Absences	950,309	962,229
Net Pension Liability	14,502,311	7,691,773
Total	\$15,789,787	\$8,838,729



Irrevocable Section 115 Pension Trust	\$ 6,540,000
19-20 Contribution & Interest Earnings	3,709,738
20-21 Interest Earnings (Gain)	1,132,184
21-22 Interest Earnings (Loss)	(1,244,034)
Total Trust Balance	10,137,888
Pension Liability	(\$ 2,446,115)

117





Major Infrastructure Investments

SilverRock Infrastructure Improvements \$2,078,000	La Quinta X Park \$1,573,000
SilverRock Event Site \$438,000	Monroe Street Pavement Rehabilitation \$430,000
Fire Station No. 70 Revitalization \$363,000	



118

The Future

-  Adopted a balanced 2023/24 budget
-  Continue to address long-term liabilities
-  Mixture of housing and commercial developments are under construction
-  Long-term vision and planning are a priority

119

**Financial
Advisory
Commission
8/9/2023**



Eide Bailly Auditor Comments

120



121

City Council Meeting
July 18, 2023
PH-1 Master Fee Schedule Update



122

User and Regulatory Fees

- Building
- Planning
- Public Works
- Fire
- NPDES inspection
- STVR
- False alarm response
- Vehicle impound
- Code Enforcement
- Pool Drain
- Bingo
- Administrative

123

Background

- City Council has directed staff to periodically update the City's Master Fee Schedule
- Typically a comprehensive study of fees and cost recovery is performed every three to five years
- In between comprehensive studies, fees are primarily updated to reflect annual Consumer Price Index (CPI) increases.

124

Background

- 2019 – Comprehensive Study Completed
- 2023 represents an interim year, with majority of fees scheduled to be increased by 4.57%

125

Primary Change

Increase most fees to reflect
Inflationary adjustment

CPI increase from
March 2022 to March 2023 = 4.57%

126

Revenue Impact

Based on historical revenues and permit volume, the adjusted fees may generate an additional \$183,000 in annual revenue.

127

Notice and Outreach



128



129