

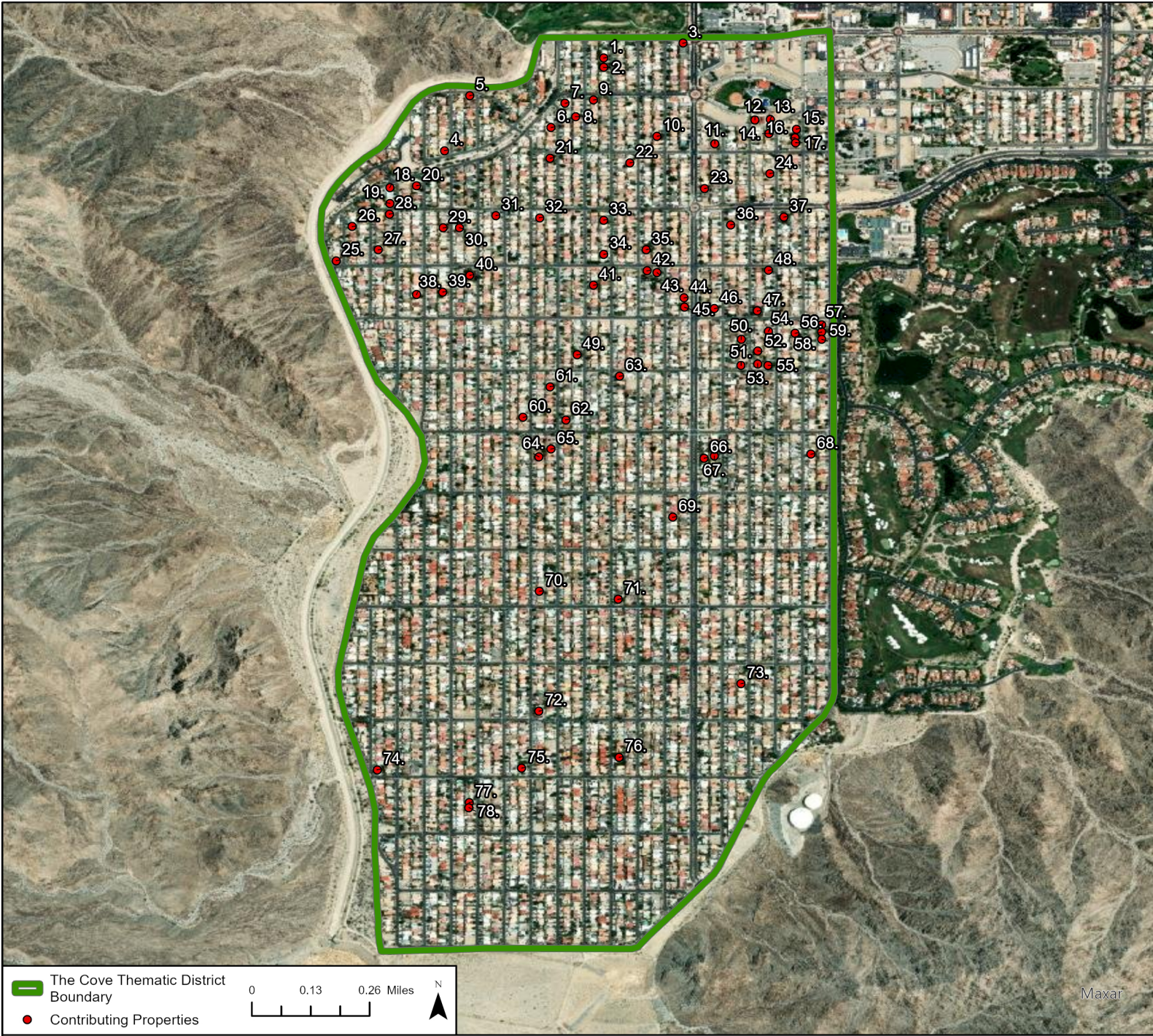
Appendix E. Historic Districts

E1. La Quinta Cove Thematic Historic District

Resource Name	Year Built	CRHR Status Code
La Quinta Milling and Lumber Company / 77895 Avenida Montezuma	1935	5B
Administration Building / 77885 Avenida Montezuma	1936	5B
Obelisks	1930s	5D2
51001 Eisenhower Drive	1938	5B
51095 Avenida Vallejo	1936	5B
51133 Avenida Vallejo	1937	5B
51262 Avenida Ramirez	1937	5B
51290 Avenida Carranza	1937	5B
51333 Avenida Ramirez	1937	5B
51377 Avenida Carranza	1937	5D2
51407 Avenida Velasco	1935	5B
51489 Avenida Martinez	1949	5D2
51411 Avenida Villa	1937	5B
51397 Avenida Navarro	1949	5D2
51431 Avenida Navarro	1950	5D2
51453 Avenida Navarro	1948	5D2
51607 Avenida Villa	1937	5D2
51662 Eisenhower Drive	1940	5D2
51537 Avenida Herrera	1937	5B
77495 Calle Hidalgo	1937	5B
51215 Avenida Rubio	1937	5D2
51495 Avenida Diaz	1938	5D2
51653 Avenida Juarez	1948	5D2
77177 Avenida Montezuma	1936	5D2
La Casita / 51733 Avenida Madero	1937	5B
51991 Avenida Morales	1936	5D2
51830 Avenida Morales	1950	5D2
51946 Avenida Cortez	1937	5D2
51775 Avenida Madero	1936	5B

51835 Avenida Diaz	1937	5D2
51842 Avenue Diaz	1936	5B
51787 Avenida Alvarado	1938	5D2
51782 Avenida Obregon	1936	5D2
51813 Avenida Vallejo	1936	5D2
51877 Avenida Vallejo	1937	5D2
51802 Avenida Martinez	1935	5B
53855 Avenida Mendoza	1948	5D2
51780 Avenida Villa	1934	5B
52031 Avenida Villa	1936	5B
52228 Avenida Mendoza	1948	5D2
52217 Avenida Martinez	1936	5D2
52155 Eisenhower Drive	1937	5B
Marcelene Carnes Home / 52217 Eisenhower Drive	1940	5B
52031 Avenida Velasco	1937	5D2
51984 Avenida Herrera (51872 Avenida Herrera)	1938	5B
52042 Avenida Herrera	1937	5B
52100 Avenida Ramirez	1936	5D2
52057 Avenida Rubio	1937	5B
52123 Avenida Diaz	1936	5D2
52159 Avenida Juarez	1936	5D2
52383 Avenida Ramirez	1937	5D2
52379 Avenida Mendoza	1948	5D2
77842 Calle Ensenada	1948	5D2
52519 Avenida Mendoza	1936	5B
52426 Avenida Mendoza	1947	5D2
52486 Avenida Mendoza	1936	5D2
52493 Avenida Villa	1936	5B
52337 Avenida Navarro	1940	5B

52301 Avenida Bermudas	1937	5B
52333 Avenida Bermudas	1937	5B
52375 Avenida Bermudas	1937	5D2
77619 Calle Ensenada	1938	5B
52720 Avenida Carranza	1947	5D2
52555 Avenida Carranza	1941	5D2
52693 Avenida Obregon	1939	5B
52860 Avenida Obregon	1947	5D2
52813 Avenida Carranza	1937	5D2
52862 Eisenhower Drive	1937	5B
52835 Avenida Martinez	1948	5D2
52830 Avenida Navarro	1938	5B
53120 Avenida Velasco	1949	5D2
53444 Avenida Obregon	1947	5D2
77618 Calle Colima	1950	5D2
77450 Calle Chillon	1941	5D2
54200 Avenida Cortez	1948	5D2
54211 Avenida Obregon	1949	5D2
54160 Avenida Vallejo	1948	5D2
54391 Avenida Rubio	1940	5D2
54415 Avenida Rubio	1940	5D2

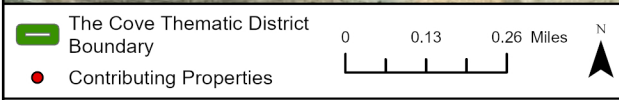


Contributing Properties

A.) Buildings

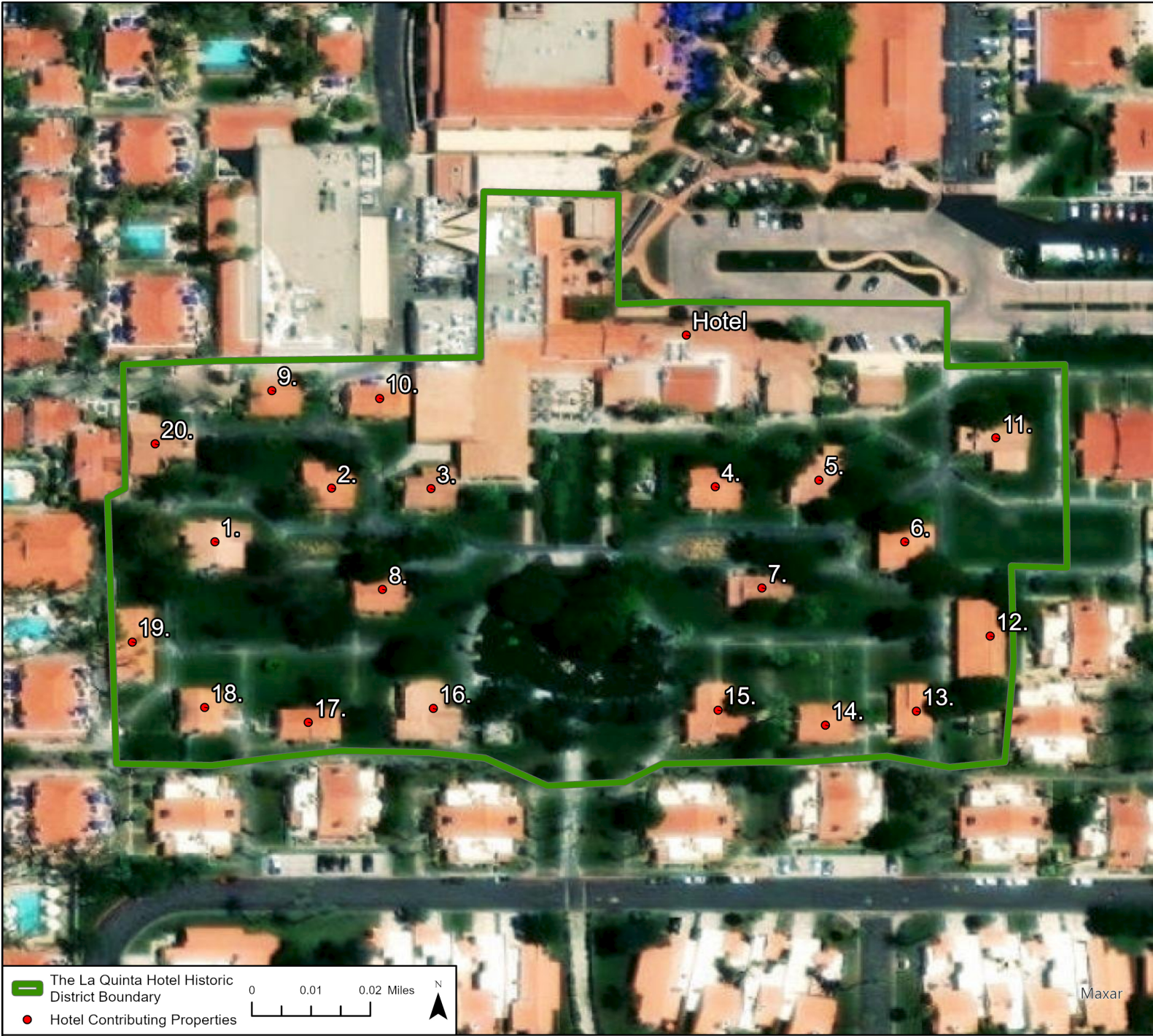
- | | |
|--------------------------------|-----------------------------------|
| 1. 51095 Avenida Vallejo Drive | 47. 52228 Avenida Mendoza |
| 2. 51133 Avenida Vallejo | 48. 52031 Avenida Villa |
| 3. 51001 Eisenhower Drive | 49. 52383 Avenida Ramirez |
| 4. 51495 Avenida Diaz | 50. 52379 Avenida Mendoza |
| 5. 51215 Avenida Rubio | 51. 77842 Calle Ensenada |
| 6. 51377 Avenida Carranza | 52. 52426 Avenida Mendoza |
| 7. 51290 Avenida Carranza | 53. 52486 Avenida Mendoza |
| 8. 51333 Avenida Ramirez | 54. 52519 Avenida Mendoza |
| 9. 51262 Avenida Ramirez | 55. 52493 Avenida Villa |
| 10. 51407 Avenida Velasco | 56. 52337 Avenida Navarro |
| 11. 51489 Avenida Martinez | 57. 52301 Avenida Bermudas |
| 12. 77885 Avenida Montezuma | 58. 52333 Avenida Bermudas |
| 13. 77895 Avenida Montezuma | 59. 52375 Avenida Bermudas |
| 14. 51411 Avenida Villa | 60. 52693 Avenida Obregon |
| 15. 51397 Avenida Navarro | 61. 52555 Avenida Carranza |
| 16. 51431 Avenida Navarro | 62. 52720 Avenida Carranza |
| 17. 51453 Avenida Navarro | 63. 77619 Calle Ensenada |
| 18. 77177 Avenida Montezuma | 64. 52860 Avenida Obregon |
| 19. 51733 Avenida Madero | 65. 52813 Avenida Carranza |
| 20. 51653 Avenida Juarez | 66. 52862 Eisenhower Drive |
| 21. 77495 Calle Hidalgo | 67. 52835 Avenida Martinez |
| 22. 51537 Avenida Herrera | 68. 52830 Avenida Navarro |
| 23. 51662 Eisenhower Drive | 69. 53120 Avenida Velasco |
| 24. 51607 Avenida Villa | 70. 53444 Avenida Obregon |
| 25. 51991 Avenida Morales | 71. 77618 Calle Colima |
| 26. 51830 Avenida Morales | 72. 77450 Calle Chillon |
| 27. 51946 Avenida Cortez | 73. 53855 (53835) Avenida Mendoza |
| 28. 51775 Avenida Madero | 74. 54200 Avenida Cortez |
| 29. 51835 Avenida Diaz | 75. 54211 Avenida Obregon |
| 30. 51842 Avenue Diaz | 76. 54160 Avenida Vallejo |
| 31. 51787 Avenida Alvarado | 77. 54391 Avenida Rubio |
| 32. 51782 Avenida Obregon | 78. 54415 Avenida Rubio |
| 33. 51813 Avenida Vallejo | |
| 34. 51877 Avenida Vallejo | |
| 35. 51872 Avenida Herrera | |
| 36. 51802 Avenida Martinez | |
| 37. 51780 Avenida Villa | |
| 38. 52159 Avenida Juarez | |
| 39. 52123 Avenida Diaz | |
| 40. 52057 Avenida Rubio | |
| 41. 52100 Avenida Ramirez | |
| 42. 52042 Avenida Herrera | |
| 43. 52031 Avenida Velasco | |
| 44. 52155 Eisenhower Drive | |
| 45. 52217 Avenida Martinez | |
| 46. 52217 Eisenhower | |

B.) Obelisk Street Markers



E2. La Quinta Hotel Historic District

Resource Name	Suite Numbers	Year Built
Main Hotel Building	N/A	1926
San Anselmo (Frank Capra Suite)	136-138	1926
San Benito	141-142	1926
San Carlos	143-144	1926
San Dimas	107-108	1926
San Emilio	104-106	1926
San Fernando	111-112	1926
San Gorgonio	109-110	1927
San Hilario	139-140	1927
San Jacinto	Security Office	1927
San Lucas	Artist Casita	1927
San Marcos	101-103	1927
San Nicolas	114-117	1927
San Onofre	118-119	1927
San Pedro	120	1927
San Quintin	122-124	1927
San Rafael	125-127	1927
San Sebastian	128-129	1927
San Timoteo	130-131	1927
Santa Ursula	132-135	1927
San Ysidro	149-151	1927



Contributing Elements

A.) Main Hotel Building

B.) Casitas

1. San Anselmo
2. San Benito
3. San Carlos
4. San Dimas
5. San Emilio
6. San Fernando
7. San Gorgonio
8. San Hilario
9. San Jacinto
10. San Lucas
11. San Marcos
12. San Nicolas
13. San Onofre
14. San Pedro
15. San Quentin
16. San Rafael
17. San Sebastian
18. San Timoteo
19. San Ursula
20. San Ysidro

C.) Landscaping Features

- Concrete paths among casitas (configuration; materials replaced).
- Significant trees among casitas: citrus, smoke trees, palms and others.
- Walls between casitas along south side of district, including benches and view openings.
- Remnant of mostly-demolished garden wall at northwest corner of former entry garden.
- Possible historic element: light standards within oval paths in center of district.